

Family First!



Maplecrest Farms

20th Annual

FEMALE PRODUCTION SALE

Saturday ■ September 23, 2023 ■ 6 PM

At the farm near Hillsboro, Ohio





John & Joanie Grimes, Owners



2594 St. Rt. 73
Hillsboro, OH 45133
John & Joanie Grimes
E-mail: MaplecrestAngus@gmail.com

www.maplecrestfarms.com



Adam, Lindsey, Holden & Henley Hall, Herdsman

Dear Friends,

We are excited to invite you to Maplecrest Farms' 20th Annual Production Sale scheduled for Saturday, September 23 at 6:00 p.m. We welcomed the opportunity to discuss this year's sale offering with you and how it can meet your seedstock needs.

My Farm accident in February significantly changed things for my family and the Maplecrest Team. The thoughts and prayers that I have received from family, friends and the cattle industry have been humbling to say the least. My family members and others have stepped up to assist with my ongoing rehab process.

Adam, Cris, and Evan have really stepped up with the cow herd management and farming activities of this operation. Breeding season, the overall health and body condition of the herd, and forage harvest have been as good as we have ever had. I am certainly proud of the job they have done.

Joanie and I are certainly excited to now have four grandchildren, Will and Lauren added their son Bowen to the mix earlier this year to join Holden, Henley, and Stokely. It is never a dull moment when all four get together.

The different enterprises that comprise our operation shape our overall breeding philosophy. Producing seedstock for purebred and commercial cattlemen requires a blend of calving ease, rapid early growth in a moderate framed package, structural correctness, and end-product merit that will work in many different environments. Raising show heifers for junior members makes you keenly aware of the value of phenotype balance and disposition. Maplecrest Meats and More provides proof that today's consumer expects us to produce a consistent, high-quality product that is raised under proper animal husbandry and environmental standards.

This sale continues our tradition of offering a true cross-section of our entire herd. We are selling high quality Angus and Simmental-Angus individuals from every production group including donors, fall yearlings, bred heifers, bred cows, and fall calving cows.

Please give us a call if we can answer any questions you may have about the cattle selling. We once again share a day of Angus opportunity with our friends at Boyd Beef Cattle who will be hosting their production sale at Noon. We look forward to seeing you the evening September 23 and remember to check out our Maplecrest Embryo Sale on Monday, September 25th.

Sincerely,

John



Cris, Megan & Griffin Sprague, Herdsman



Evan Modro

Make a day of it by attending...

**BOYD BEEF CATTLE
PRODUCTION SALE**

Saturday • Noon

September 23, 2023

May's Lick, KY

**MAPLECREST FARMS FROZEN GENETICS
ONLINE EMBRYO REDUCTION SALE**

Monday • 6:00 p.m.

September 25, 2023

Hosted by Angus Live



2023 Production Sale

6 P.M. • Saturday
SEPTEMBER 23, 2023

At the farm • Hillsboro, Ohio

Selling 77+ Angus & Sim-Angus Females

Featuring 11 Fall Heifer Donor Prospects
37 - Spring Bred Heifers • 15 - Spring Bred Cows
13 - Fall Calving Cows

SALE DAY PHONES:

(740) 336-8142 - Adam Hall (937) 763-8115 - Lindsey Hall
(937) 763-6000 - John Grimes (937) 763-1198 Joanie Grimes

AUCTIONEER:

Steve Dorran

SALE CONSULTANTS:

Roger West (254) 434-1095 Tom Dalbey 404-372-0973
Parker Friedrich (254) 413-2420 Zach Moffitt 336-736-6340
Joe Beaver (423) 426-2986 Rance Long 918-510-3464

Buyers unable to attend the sale may send their bids
to the Sale Manager, Regional Manager,
Field Representatives or Auctioneer.

LIVESTOCK PUBLICATION REPRESENTATIVES:

Alex Tolbert, Angus Journal
Dick Carmichael, Special Assignment
Delvin Heldermon, Special Assignment

SALE BOOK PREPARED:



Roger West Consulting LLC
1315 N. Magnolia Dr.
Stephenville, TX 76401

LiveAuctions.TV

TECHNICAL SUPPORT:
682.816.4900
TechSupport@LiveAuctions.tv

ACCOMMODATIONS:

Days Inn (937) 393-0299

103 Harry Sauner Road • Hillsboro, Ohio

Comfort Inn (937) 386-2511

55 Stern Dr., Seaman, Ohio

Holiday Inn Express (937) 383-5858

Located approximately 35 miles from sale site in
Wilmington, Ohio

TERMS AND CONDITIONS: Cattle will sell under the suggested Terms and Conditions of the American Angus Association (http://www.angus.org/Pub/suggested_sale_terms.pdf).

SUPPLEMENTAL INFORMATION: A supplemental sheet will be available sale day with complete and up-to-date information. Announcements from the auction block take precedence over sale book information.

HERD HEALTH: Maplecrest Farms is federally certified and accredited and all sale cattle will be accompanied by appropriate health certificates for immediate shipment.

TRUCKING: Truckers believed to be reliable will be available to assist you in shipping your purchases.

LIVESTOCK MORTALITY INSURANCE: A representative will be available to assist you with mortality insurance for your purchases.

FOOD AND REFRESHMENTS: Will be available sale day featuring Certified Angus Beef.

DIRECTIONS TO THE SALE SITE: Maplecrest Farms headquarters is located approximately 10 miles south of Hillsboro, Ohio at 2594 State Route 73, Hillsboro, Ohio. Hillsboro is approximately 70 miles from the Cincinnati-Northern Kentucky International Airport and approximately 80 miles from the Columbus, Ohio International Airport.

GPS LOCATION: 2594 State Route 73 Hillsboro, OH

AI CERTIFICATES will be provided only on bulls owned by Maplecrest Farms.

**VIDEOS AVAILABLE ON ALL CATTLE AT
WWW.MAPLECRESTFARMS.COM**

RANKS WITHIN THE SALE BOOK

TOP 10%

TOP 25%

AM EPDs contained in the hard copy of this sale book were current as of print date. Digital versions of this sale book can be viewed online at www.angus.org and will have EPDs updated every Friday with the exception of EPD references in footnotes and photos. Any PDF downloads from the website will contain EPDs current as of the date downloaded. References: American Angus Association®, AHIR®, AngusLink®, CAB®, Pathfinder®.

ELITE *Fall Heifers*



LOT 1
Maplecrest Rita 2256



Maplecrest Rita 2256

BD: 09-22-2022 | Cow **20600628** | Tattoo: 2256

+*GAR Discovery 6737H

#*V A R Discovery 2240

***E & B Wildcat 9402**
19810163

E&B Lady Plus 643

*G A R Ingenuity 3132

#*Connealy Confidence Plus

#+E&b Lady Credence 190

#**G A R Sure Fire

***Maplecrest Rita 8097**
19289234

*G A R Prophet 1754

#*Connealy In Sure 8524

+Chair Rock 5050 G A R 8086

#*G A R Prophet

*G A R Daybreak C80



CW
+80
MARB
+1.68
RE
+1.05
FAT
+0.27
\$M
+95

\$AXH
+260
\$W
+81

CED	BEPD	WEPD	YEPD	SC	DOC	MILK	\$AXJ	\$B	\$C
+17	-1.2	+81	+155	+1.11	+27	+30	+241	+236	+401

CED	BW	WW	YW	DMI	YH	SC	DOC	HP	CEM	MILK	MW	MH	CW	Marb	RE	Fat	TEND	\$C
1	2	68	15	88	86	22	15	5	32	30	85	93	27	1	25	81	58	+401

Selling one-half interest

We start off our 20th anniversary sale with one of the most unique donor prospects we have ever offered. 2256 features a truly unique combination of impressive calving ease, explosive growth, maternal traits, and elite carcass merit in an eye appealing package.

Check out her breed leading \$ indexes which are all in the top 1 or 2%. Her productive dam sold as a feature in last year's sale to Dal Porto Livestock in Nebraska.



Maplecrest Rita 8097 - Dam of Lot 1

ELITE *Fall Heifers*



LOT 2
Maplecrest Blackcap 2247



Maplecrest Blackcap 2247

BD: 09-20-2022 | Cow ****20600625** | Tattoo: 2247

****G A R Transcendent**
19570738

*G A R Momentum
*G A R Prophet 2685

***G A R Ingenuity 3132**
17553925

#G A R Ingenuity
*G A R 28 Ambush N340

#*G A R Progress
+G A R Big Eye 1770
#*G A R Prophet
+*G A R Daybreak 2842
#*G A R New Design 5050
G A R Objective 1067
#*B/R Ambush 28
+G A R Predestined 2786



CW	+70
MARB	+1.99
RE	+1.28
FAT	-.037
\$M	+57
\$W	+70
\$AXH	+247
\$AXJ	+262
\$B	+240
\$C	+368

CED	BEPD	WEPD	YEPD	SC	DOC	MILK	\$AXH	\$B										
+13	+3	+79	+145	+80	+23	+26	+262	+240										
CED	BW	WW	YW	DMI	YH	SC	DOC	HP	CEM	MILK	MW	MH	CW	Marb	RE	Fat	TEND	\$C
14	20	42	13	87	27	30	66	44	88	46	25	13	22	1	2	8	99	+368

Here is a direct daughter of the productive and valuable G A R Ingenuity 3132. 2247 features a unique combination of calving ease, growth, along with elite Marbling and Ribeye EPDs. 3132 is the granddam of the popular Genex sire E&B Wildcat 9402 as well as the ST Genetics sire Connealy Commerce. 3132 has over \$800,000 in lifetime progeny sales which includes the \$68,000 top-selling female in the 2022 Maplecrest sale to ST Genetics.



Maplecrest Blackcap 1310 - \$68,000 Maternal sister to Lot 3



G A R Ingenuity 3132 - The legendary Dam of Lot 3 & G A R Sunbeam

ELITE *Fall Heifers*



LOT 3
Leegan Karama 2351



Leegan Karama 2351

BD: 11-23-2022 | Cow **+*20521580** | Tattoo: 2351

#*Spring Cove Reno 4021

#*KM Broken Bow 002

+*Yon Top Cut G730

*Spring Cove Liza 021

19476453 +*Yon Sarah D668

#*V A R Discovery 2240

+*Yon Sarah A615

*E W A Peyton 642

+*Quaker Hill Manning 4EX9

***Leegan Karama 0350**

#*E W A 444 of 968 Progress

19848225 +*Powell Karama 8350

+*ECO Lombardi 1512

+*Williams Prop Karama 200-117



CW	+71
MARB	+1.41
RE	+91
FAT	+0.04
\$M	+109
\$W	+97
\$AXH	+199
\$B	+185
\$C	+365

CED	BEPD	WEPD	YEPD	SC	DOC	MILK	\$AXH	\$B	\$C								
+6	+3.2	+98	+158	+1.45	+27	+34	+199	+185	+197								
CED	BW	WW	YW	DMI	YH	SC	DOC	HP	CEM	MILK	MW	MH	CW	Marb	RE	Fat	TEND
49	81	4	32	77	65	22	8	1	47	20	53	63	15	2	19	74	85

Consigned by Leegan Farms, McEwen, TN

This daughter of the popular Select Sires feature Yon Top Cut G730 brings a lot of genetic merit to the table. She combines powerful growth, elite HP EPD, excellent carcass traits, with special \$ Indexes. In fact, her elite \$M combined with explosive growth is truly a rare combination. Her flush sister was the \$40,000 top open heifer in the Angus Roundup in Fort Worth this spring. She has EPD's, genomics and phenotype all wrapped into one elite package.



Yon Top Cut G730 - Sire of Lot 2



Yon Hazel K158 - Featured Maplecrest & Pollard Donor that is a paternal sister to Lot 3

ELITE *Fall Heifers*



LOT 4
Maplecrest Fanny 2231



Maplecrest Fanny 2231

BD: 08-16-2022 | Cow **20600621 | Tattoo: 2231

- *G A R Ashland
- *G A R Early Bird
- *G A R Home Town
- 19266718
- *Chair Rock Sure Fire 6095
- *Chair Rock Ambush 1018
- *Chair Rock Progress 3005
- *Chair Rock Fire
- *G A R Sunbeam
- *G A R Sunrise
- *Maplecrest Fanny 0063
- 19886809
- *Maplecrest Fanny 8017
- *G A R Ingenuity 3132
- *G A R Proactive
- *SJH Ms Confidence 170



CW	+57
MARB	+1.57
RE	+1.00
FAT	-.014
\$M	+73
\$W	+69
\$AXH	+236
\$AXJ	+223
\$B	+210
\$C	+345

CED	BEPD	WEPD	YEPD	SC	DOC	MILK	\$AXH	\$B										
+13	+3	+74	+130	+83	+27	+21	+236	+210										
CED	BW	WW	YW	DMI	YH	SC	DOC	HP	CEM	MILK	MW	MH	CW	Marb	RE	Fat	TEND	\$C
12	29	75	60	35	96	30	26	53	61	79	81	97	63	2	26	26	86	+345

Selling one-half embryo interest with the option to double. 2231 is the first daughter that we have offered out of the \$120,000 - valued Maplecrest and Baldrige donor Maplecrest Fanny 0063. Like her dam, 2231 presents a well-balanced EPD profile in an eye appealing package. The first two progeny that Baldrige's sold out of 0063 have averaged \$22,000 per head. Don't miss out on the growing popularity of this cow family.



Maplecrest Fanny 8017 - Granddam of Lot 5 & leadoff Fall Calving Cow in this year's sale



Maplecrest Fanny 0063 - The \$120,000 valued dam of Lot 44 working in the Baldrige and Maplecrest Programs

ELITE *Fall Heifers*



LOT 5
Maplecrest Blackcap 2295



Maplecrest Blackcap R0163 -
Dam of Lot 5 & Lot 23



G A R Home Town - Sire of Lots 4
through 8



PAR Blackcap 9169 - Dam of Lot 6



LOT 6
Maplecrest Blackcap 2232

5 Maplecrest Blackcap 2295

BD: 09-17-2022 | Cow ****20600637** | Tattoo: 2295
 *G A R Ashland *G A R Early Bird
***G A R Home Town** *Chair Rock Ambush 1018
 19266718 **Chair Rock Sure Fire 6095
 **G A R Sure Fire
 *Chair Rock Progress 3005
 *Connealy Emerald **Connealy Confidence Plus
****Maplecrest Blackcap R0163** Jace of Conanga 6571
 19885700 **Maplecrest Blackcap F5247 **G A R Prophet
 *G A R 28 Ambush N340



CW	+52
MARB	+1.75
RE	+1.01
FAT	-.054
\$M	+67
\$W	+216
\$AXH	+227
\$B	+217
\$C	+348

CED	BEPD	WEPD	YEPD	SC	DOC	MILK	\$AXJ	\$B	\$C								
+3	+3.2	+67	+129	+.86	+36	+28	+216	+217	+348								
CED	BW	WW	YW	DMI	YH	SC	DOC	HP	CEM	MILK	MW	MH	CW	Marb	RE	Fat	TEND
73	79	76	23	46	75	25	2	23	4	45	39	51	51	1	17	2	35

This eye-catching daughter of Home Town was produced by one of the very best Emerald daughters to be found. This female possesses strong genetic indicators for maternal and carcass traits ranking in the top 1% for Marb, \$Grid and \$Combined.

6 Maplecrest Blackcap 2232

BD: 08-16-2022 | Cow ****20656642** | Tattoo: 2232
 *G A R Ashland *G A R Early Bird
***G A R Home Town** *Chair Rock Ambush 1018
 19266718 **Chair Rock Sure Fire 6095
 **Chair Rock Progress 3005
 *G A R Inertia *G A R Momentum
***PAR Blackcap 9169** *G A R Prophet 2984
 19659167 **Maplecrest Blackcap 7124 *V A R Ranger 3008
 *G A R 28 Ambush N340



CW	+63
MARB	+1.43
RE	+1.11
FAT	+.022
\$M	+84
\$W	+86
\$AXH	+198
\$B	+205
\$C	+193

CED	BEPD	WEPD	YEPD	SC	DOC	MILK	\$AXH	\$B	\$C								
+12	+.1	+81	+137	+.82	+20	+29	+198	+205	+193								
CED	BW	WW	YW	DMI	YH	SC	DOC	HP	CEM	MILK	MW	MH	CW	Marb	RE	Fat	TEND
21	38	30	42	71	36	28	40	58	29	29	81	67	20	3	5	53	82

Here is an excellent cow prospect from the noted Blackcap cow family. 2232 traces directly to G A R 28 Ambush N340 who shows up in numerous pedigrees in the Maplecrest herd. We purchased her dam from Percy Angus Ranch in Texas who served us very well in our donor program with progeny ratios on six head of 107 for IMF and 104 for ribeye. She represents our breeding program well with her combination of calving ease, growth, carcass merit, and solid \$ indexes ranking in the top 1% for \$Combined.

ELITE *Fall Heifers*



**Maplecrest Blackcap 8032 -
G A R Sunrise Daughter &
Dam of Lot 7**



**LOT 7
Maplecrest Blackcap 2262**



Maplecrest Blackcap 2262

BD: 08-27-2022 | Cow ****20600630** | Tattoo: 2262

*G A R Ashland *G A R Early Bird
*Chair Rock Ambush 1018
*G A R Home Town *Chair Rock Sure Fire
19266718 *Chair Rock Progress 3005

#*G A R Sunrise #MCC Daybreak
*Maplecrest Blackcap 8032 *G A R Objective R227
19289221 **Maplecrest Blackcap 6042 #*G A R 100X
*Maplecrest Blackcap 3007



CW	+53
MARB	+1.50
RE	+1.24
FAT	-.061
\$M	+60
\$W	+69
\$AXH	+209
\$AXJ	+212
\$B	+201
\$C	+321

CED	BEPD	WEPD	YEPD	SC	DOC	MILK	\$AXH	\$W	\$B	\$C								
+9	+2.2	+74	+128	+1.23	+29	+29	+209	+69	+201	+321								
CED	BW	WW	YW	DMI	YH	SC	DOC	HP	CEM	MILK	MW	MH	CW	Marb	RE	Fat	TEND	\$C
46	67	67	55	32	73	17	11	44	73	41	50	32	56	2	3	1	63	+321

2262 is a flush sister to Carly Sander's Grand Champion Female at The 2023 Ohio Junior Angus Preview Show and class winner at The 2023 National Junior Angus PGS Show. She comes from the same cow family that produced the ST Genetics sire G A R Drive and ranks in the top 1% for RE and \$Grid as well as top 3% for Marb and \$Beef.



Maplecrest Eva 2283

BD: 09-07-2022 | Cow ***20657426** | Tattoo: 2283

*G A R Ashland *G A R Early Bird
*Chair Rock Ambush 1018
*G A R Home Town *Chair Rock Sure Fire
19266718 *Chair Rock Progress 3005

SydGen Enhance #SydGen Exceed 3223
*Maplecrest Eva 9262 SydGen Rita 2618
19726374 *Maplecrest Eva 5221 #*V A R Generation 2100
Maplecrest Eva 7010



CW	+71
MARB	+1.02
RE	+1.26
FAT	-.035
\$M	+59
\$W	+81
\$AXH	+203
\$AXJ	+220
\$B	+198
\$C	+316

CED	BEPD	WEPD	YEPD	SC	DOC	MILK	\$AXH	\$W	\$B	\$C								
+11	+5	+81	+151	+76	+32	+34	+203	+81	+198	+316								
CED	BW	WW	YW	DMI	YH	SC	DOC	HP	CEM	MILK	MW	MH	CW	Marb	RE	Fat	TEND	\$C
11	15	69	19	55	64	60	6	89	14	13	75	79	28	18	3	2	32	+316

This attractive daughter of Home Town posted an individual weaning ratio of 118 and delivers the expected calving ease with positive growth and impressive carcass merit. Her dam by Enhance traces directly to Maplecrest Eva 7010, the dam of ST Genetics sire G A R Storm.



**LOT 8
Maplecrest Eva 2283**



**G A R Home Town - Popular sire
of Lots 4 through 8**

ELITE Fall Heifers

9

Maplecrest Rita 2223

BD: 09-14-2022 | Cow *20600620 | Tattoo: 2223

#*G A R Sure Fire

#*Connealy In Sure 8524

***G A R Dual Threat**

+Chair Rock 5050 G A R 8086

19123898 *G A R Daybreak A3010

#MCC Daybreak

*G A R Method

*G A R 5050 New Design A91

***Maplecrest Rita 9210**

*G A R Momentum

19723909 *AH/LA Rita 1183

*G A R Daybreak 1332

*G A R Storm

*FF Rita 3R37 of 9Q23 Revenue

CED	BEPD	WEPD	YEPD	SC	DOC	MILK	\$AXH	\$W	\$B									
+16	-1.9	+76	+149	+1.90	+33	+32	+197	+75	+206									
CED	BW	WW	YW	DMI	YH	SC	DOC	HP	CEM	MILK	MW	MH	CW	Marb	RE	Fat	TEND	\$C
1	2	57	7	91	38	1	5	28	63	32	34	31	30	4	30	69	9	+333

Here is a daughter of the Select Sires feature G A R Dual Threat.

The bottom side of her pedigree features the past Maplecrest sires G A R Method and G A R Storm. Rita

2223 posted individual ratios of 84 for birth and 121 for weaning and she combines elite calving ease with strong growth and carcass traits that can be used to create desirable herd bull prospects for commercial cattlemen. Her dam, Maplecrest Rita 9210, sells as Lot 59!



LOT 9
Maplecrest Rita 2223

10

Maplecrest Forever Lady 2307

BD: 10-04-2022 | Cow **20600639 | Tattoo: 2307

*Musgrave 316 Stunner

#*LD Capitalist 316

***DB Iconic G95**

#MCATL Blackbird 831-1378

19611994 *DB Ms Discovery D13

#V A R Discovery 2240

DB Ms Final Tool 4120

*G A R Ashland

*G A R Early Bird

***Maplecrest Forever Lady 9005**

*Chair Rock Ambush 1018

19572131 *Maplecrest Forever Lady 7058

#*G A R Sure Fire

*Maplecrest ForeverLady S5090

CED	BEPD	WEPD	YEPD	SC	DOC	MILK	\$AXH	\$W	\$B									
+10	+0	+86	+156	+1.93	+23	+24	+215	+79	+195									
CED	BW	WW	YW	DMI	YH	SC	DOC	HP	CEM	MILK	MW	MH	CW	Marb	RE	Fat	TEND	\$C
30	33	64	21	60	98	4	39	56	92	80	71	95	84	1	85	99	68	+314

This interesting prospect is a daughter of the featured Genex sire Iconic. She delivers solid calving ease, explosive growth, and comes from a strong maternal line known for producing extra Marbling which helped place this female in the top 1% for that valuable trait.



LOT 10
Maplecrest Forever Lady 2307

11

Leegan Erica 2334

BD: 09-18-2022 | Cow **20450560 | Tattoo: 2334

*G A R Prophet K263

#*G A R Prophet

***Beal Breakthrough**

*Chair Rock 5050 G A R 1131

19829112 *H P C A Sure Fire S6

#*G A R Sure Fire

*ECO Lombardi 1512

*H P C A Ingenuity A372

***Powell Erica 8334**

#V A R Discovery 2240

19197054 *Williams Prop Erica 255-139

*RB Lady 7125-890-2170

#*G A R Prophet

*Williams Erica 812

CED	BEPD	WEPD	YEPD	SC	DOC	MILK	\$AXH	\$W	\$B									
+16	-4	+82	+142	+80	+14	+26	+173	+80	+176									
CED	BW	WW	YW	DMI	YH	SC	DOC	HP	CEM	MILK	MW	MH	CW	Marb	RE	Fat	TEND	\$C
30	61	28	21	76	34	54	55	7	93	83	44	26	41	10	1	5	97	+307

Consigned by Leegan Farms, McEwen, TN

This heifer is sired by the popular ST Genetics sire Beal Breakthrough. She blends extra calving ease, excellent growth, positive HP EPD and strong carcass merit. Her maternal granddam is the \$100,000 Williams Prop Erica 255-139. A maternal sister sold for \$9,000 in the Southern Synergy Sale this spring.



LOT 11
Leegan Erica 2334

BRED *Heifers*



G A R Ashland 1198 - The popular donor dam now working in the Walkers Branch Program in Hamptonville, NC



LOT 12A
Maplecrest Rita 2024



LOT 12B
Maplecrest Rita R2154



ST Genetics Sire G A R Sunbeam - Service Sire of Lot 12A

12A Maplecrest Rita 2024
 BD: 01-06-2022 | Cow ****20377767** | Tattoo: 2024
 #*G A R Sure Fire #*Connealy In Sure 8524
****G A R Combustion** +Chair Rock 5050 G A R 8086
 18943322 +*G A R Momentum 1724 *G A R Momentum
 *G A R 28 Ambush M91
 *G A R Ashland *G A R Early Bird
****G A R Ashland 1198** *Chair Rock Ambush 1018
 19266300 +*G A R Sunrise N816 #**G A R Sunrise
 +*G A R 28 Ambush 3162

CW	+60
MARB	+1.70
RE	+0.78
FAT	-0.031
\$M	+61
\$W	+214
\$AXH	+218
\$B	+177
\$C	+339

CED	BEPD	WEPD	YEPD	SC	DOC	MILK	\$AXJ	\$B
+8	+1.7	+87	+149	+1.26	+23	+18	+177	+214

CED	BW	WW	YW	DMI	YH	SC	DOC	HP	CEM	MILK	MW	MH	CW	Marb	RE	Fat	TEND	\$C
20	24	53	45	16	92	25	36	44	86	97	78	82	72	1	48	8	81	+339

12B Maplecrest Rita R2154
 BD: 03-19-2022 | Cow ****20453695** | Tattoo: R2154
 #*G A R Sure Fire #*Connealy In Sure 8524
****G A R Dual Threat** +Chair Rock 5050 G A R 8086
 19123898 +*G A R Daybreak A3010 #MCC Daybreak
 *G A R Ashland *G A R 5050 New Design A91
****G A R Ashland 1198** *Chair Rock Ambush 1018
 19266300 +*G A R Sunrise N816 #**G A R Sunrise
 +*G A R 28 Ambush 3162

CW	+72
MARB	+1.32
RE	+0.93
FAT	-0.005
\$M	+62
\$W	+214
\$AXH	+223
\$B	+177
\$C	+340

CED	BEPD	WEPD	YEPD	SC	DOC	MILK	\$AXJ	\$B
+12	+0.7	+82	+151	+0.80	+22	+31	+233	+214

CED	BW	WW	YW	DMI	YH	SC	DOC	HP	CEM	MILK	MW	MH	CW	Marb	RE	Fat	TEND	\$C
18	49	42	16	43	43	44	43	51	34	32	30	26	23	5	16	22	98	+340

We lead off the bred heifer section of this sale with this tremendous cow and donor prospect. Her productive donor dam was sold as a feature in our 2022 sale to Walkers Branch Angus in North Carolina. Rita 2024 balances an appealing profile with tons of volume and capacity and she combines superior growth with elite Marbling and excellent \$B and \$C indexes. 2024 has been flushed 5 times to average 4 high quality embryos per flush.
 Sells due to calve December 30, 2023 to G A R Sunbeam.

This maternal sister to Lot 12A sired by Dual Threat combines solid calving ease, growth, carcass merit, and \$Beef and \$Combined indexes. R2154 has been flushed once to produce 13 high quality embryos.
 Sells due to calve January 7, 2024 to G A R Transcendent.

BRED Heifers



LOT 14
Maplecrest Blackcap 2049

13A Maplecrest Blackcap B2115
BD: 03-11-2022 | Cow ****20453626** | Tattoo: B2115

***G A R Combustion**
18943322 *G A R Momentum 1724

***G A R Ingenuity 3132**
17353925 *G A R 28 Ambush N340

#*G A R Sure Fire #*Connealy In Sure 8524
+Chair Rock 5050 G A R 8086
*G A R Momentum
*G A R 28 Ambush M91
#*G A R New Design 5050
G A R Objective 1067
#*B/R Ambush 28
+G A R Predestined 2786

CW	+62
MARB	+1.40
RE	+1.02
FAT	+0.15
\$M	+82
\$B	+67
\$AXH	+206
\$W	+67
\$AXJ	+204
\$B	+206
\$C	+349

CED	BE PD	WE PD	YE PD	SC	DOC	MILK
+13	-.1	+64	+112	+68	+18	+28

CED	BW	WW	YW	DMI	YH	SC	DOC	HP	CEM	MILK	MW	MH	CW	Marb	RE	Fat	TEND
2	2	84	75	13	58	67	71	6	32	57	77	38	42	4	15	54	92

Here is the first of two flush sisters sired by Combustion out of the popular and valuable 3132 who has an astounding 100 progeny turned in to AHIR that posted average ratios of 103 for IMF and 102 for ribeye. This heifer features solid calving ease, strong carcass merit, and excellent \$M, \$B, and \$C indexes. Sells due to calve February 13, 2024 to Beal Breakthrough.

13B Maplecrest Blackcap B2116
BD: 03-07-2022 | Cow ****20453627** | Tattoo: B2116

***G A R Combustion**
18943322 *G A R Momentum 1724

***G A R Ingenuity 3132**
17353925 *G A R 28 Ambush N340

#*G A R Sure Fire #*Connealy In Sure 8524
+Chair Rock 5050 G A R 8086
*G A R Momentum
*G A R 28 Ambush M91
#*G A R New Design 5050
G A R Objective 1067
#*B/R Ambush 28
+G A R Predestined 2786

CW	+53
MARB	+1.49
RE	+0.96
FAT	+0.11
\$M	+76
\$B	+63
\$AXH	+196
\$W	+63
\$AXJ	+176
\$B	+198
\$C	+333

CED	BE PD	WE PD	YE PD	SC	DOC	MILK
+14	+1	+65	+119	-.02	+19	+25

CED	BW	WW	YW	DMI	YH	SC	DOC	HP	CEM	MILK	MW	MH	CW	Marb	RE	Fat	TEND
5	13	74	36	51	54	94	65	5	32	67	63	37	54	3	19	53	96

Blackcap B2116 writes a similar script to her Lot 13A flush sister with more Marbling. Sells bred to Beal Breakthrough on May 15 and exposed to G A R Grass Roots.

14 Maplecrest Blackcap 2049
BD: 01-22-2022 | Cow ****20380258** | Tattoo: 2049

***G A R Ashland**
19266637 *Chair Rock Momentum 6057

***PAR Blackcap 9169**
19659167 *Maplecrest Blackcap 7124

*G A R Early Bird
*Chair Rock Ambush 1018
*G A R Momentum
*Chair Rock Sure Fire 4060
*G A R Momentum
*G A R Prophet 2984
*V A R Ranger 3008
*G A R 28 Ambush N340

CW	+63
MARB	+1.54
RE	+1.28
FAT	-0.05
\$M	+67
\$B	+72
\$AXH	+202
\$W	+72
\$AXJ	+224
\$B	+211
\$C	+341

CED	BE PD	WE PD	YE PD	SC	DOC	MILK
+11	+.4	+76	+142	+81	+27	+29

CED	BW	WW	YW	DMI	YH	SC	DOC	HP	CEM	MILK	MW	MH	CW	Marb	RE	Fat	TEND
29	33	54	32	85	17	46	10	35	14	41	63	20	36	2	2	27	62

Blackcap 2049 posted individual ultrasound ratios of 118 for IMF and 113 for ribeye and she stems from a granddam who is responsible for \$68,000 in progeny sales on 7 head. She possesses predictable genetics for calving ease and growth along with elite carcass traits and \$B and \$C indexes. 2049 has been flushed 3 times to average 4 high quality embryos per flush.

Sells due to calve January 28, 2024 to GB Fireball 672.



G A R Ingenuity 3132 - Dam of Lot 13A & 13B

BRED Heifers

15 **Maplecrest Blackcap L2170**
 BD: 02-20-2022 | Cow ****20450664** | Tattoo: L2170
 *G A R Ashland *G A R Early Bird
***G A R Kansas** *Chair Rock Ambush 1018
 19266637 *Chair Rock Momentum 6057 *G A R Momentum
 #*G A R Sunrise #MCC Daybreak
****Maplecrest Blackcap 7175** *G A R Objective R227
 19106416 *G A R Ingenuity #*G A R Ingenuity
 *G A R 28 Ambush N340

CW	+57
MARB	+1.73
RE	+1.39
FAT	+0.39
\$M	+52
\$W	+69
\$AXH	+206
\$AXJ	+224
\$B	+211
\$C	+326

CED	BEPD	WEPD	YEPD	SC	DOC	MILK	\$AXJ	\$B
+15	-1.4	+70	+132	+38	+22	+31	+224	+211

CED	BW	WW	YW	DMI	YH	SC	DOC	HP	CEM	MILK	MW	MH	CW	Marb	RE	Fat	TEND
7	14	57	18	91	12	62	45	55	64	30	28	9	46	1	1	4	55



This daughter of Kansas from the Pearcy Angus Ranch donor Maplecrest Blackcap 7175 posted individual ultrasound ratios of 106 for IMF and 114 for ribeye and carries on the genetic strength of the Blackcap cow family. She combines extra calving ease with elite carcass traits and strong \$B and \$C indexes. Sells due to calve January 7, 2024 to G A R Apex.



Maplecrest Blackcap 7175 - Pearcy Donor dam of Lot 15

18A **Maplecrest Blackcap R2155**
 BD: 03-16-2022 | Cow ****20450670** | Tattoo: R2155
 *G A R Ashland *G A R Early Bird
***G A R Kansas** *Chair Rock Ambush 1018
 19266637 *Chair Rock Momentum 6057 *G A R Momentum
 #*G A R Prophet #C R A Bextor 872 5205 608
****Maplecrest Blackcap A5237** *G A R Objective 1885
 18471712 *Maplecrest Blackcap K2219 #*Connealy Confidence 0100
 *G A R Total 9A38

CW	+66
MARB	+1.53
RE	+1.04
FAT	+0.06
\$M	+62
\$W	+81
\$AXH	+204
\$AXJ	+217
\$B	+200
\$C	+321

CED	BEPD	WEPD	YEPD	SC	DOC	MILK	\$AXJ	\$B
+12	+7	+90	+159	+93	+16	+24	+217	+200

CED	BW	WW	YW	DMI	YH	SC	DOC	HP	CEM	MILK	MW	MH	CW	Marb	RE	Fat	TEND
9	16	12	16	93	25	48	74	48	40	62	35	51	26	3	10	42	97

Blackcap R2155 has a combination of calving ease growth, carcass merit and \$ indexes that are not easily created. She has the work done for you. Her dam was a long time donor for us and was a proven source for the traits previously mentioned. Sells due to calve February 15, 2024 to G A R Fireproof.

16 **Maplecrest TD Rita W2178**
 BD: 02-15-2022 | Cow ****20450674** | Tattoo: W2178
 *G A R Ashland *G A R Early Bird
***G A R Kansas** *Chair Rock Ambush 1018
 19266637 *Chair Rock Momentum 6057 *G A R Momentum
 #*G A R Prophet #C R A Bextor 872 5205 608
****G A R Prophet 685** *G A R Objective 1885
 18333056 *G A R 28 Ambush 28
 *G A R Predestined 1869

CW	+52
MARB	+1.95
RE	+0.88
FAT	+0.21
\$M	+37
\$W	+62
\$AXH	+222
\$AXJ	+208
\$B	+207
\$C	+305

CED	BEPD	WEPD	YEPD	SC	DOC	MILK	\$AXJ	\$B
+16	-1.3	+74	+136	+96	+28	+17	+208	+207

CED	BW	WW	YW	DMI	YH	SC	DOC	HP	CEM	MILK	MW	MH	CW	Marb	RE	Fat	TEND
8	17	33	14	99	35	40	13	97	99	91	20	47	33	1	23	65	96

This Kansas daughter posted individual ratios of 118 for IMF and 104 for ribeye and comes from a Prophet dam that has consistently ranked in the top 100 active dams for marbling in the entire breed and has 47 progeny IMF ratios of 107. Check out her unique combination of superior calving ease, positive growth, elite Marbling, and impressive \$B and \$C indexes. Sells due to calve February 21, 2024 to Pamer MC Touchdown 003.

18B **Maplecrest Blackcap B2130**
 BD: 03-06-2022 | Cow ****20450290** | Tattoo: B2130
 #*Connealy Confidence Plus #*Connealy Confidence 0100
***Connealy Emerald** Elbanna of Conanga 1209
 19257149 Jace of Conanga 6571 #*Connealy Armory
 #*G A R Prophet *Jazzy of Conanga 4660 860C
****Maplecrest Blackcap A5237** #C R A Bextor 872 5205 608
 18471712 *Maplecrest Blackcap K2219 *G A R Objective 1885
 *G A R Total 9A38 #*Connealy Confidence 0100

CW	+64
MARB	+1.24
RE	+0.95
FAT	+0.20
\$M	+62
\$W	+82
\$AXH	+191
\$AXJ	+191
\$B	+182
\$C	+298

CED	BEPD	WEPD	YEPD	SC	DOC	MILK	\$AXJ	\$B
+6	+2.0	+100	+169	+04	+28	+19	+191	+182

CED	BW	WW	YW	DMI	YH	SC	DOC	HP	CEM	MILK	MW	MH	CW	Marb	RE	Fat	TEND
58	60	2	12	90	51	94	14	61	23	93	10	19	21	11	6	51	44

This maternal sister to Lot 18A by Emerald inherited explosive growth from her dam as well. She still retains positive carcass merit and \$Beef and \$Combined indexes. Sells due to calve February 15, 2024 to G A R Apex.

17 **Maplecrest Blackcap B2119**
 BD: 03-04-2022 | Cow ****20450666** | Tattoo: B2119
 *G A R Ashland *G A R Early Bird
***G A R Kansas** *Chair Rock Ambush 1018
 19266637 *Chair Rock Momentum 6057 *G A R Momentum
 #*G A R Sure Fire *Chair Rock Sure Fire 4060
***Maplecrest Blackcap 7128** #*Connealy In Sure 8524
 19106012 *Maplecrest Blackcap F5247 *Chair Rock 5050 G A R 8086
 *G A R Prophet
 *G A R 28 Ambush N340

CW	+49
MARB	+1.34
RE	+0.78
FAT	+0.24
\$M	+56
\$W	+69
\$AXH	+186
\$AXJ	+184
\$B	+181
\$C	+291

CED	BEPD	WEPD	YEPD	SC	DOC	MILK	\$AXJ	\$B
+15	+0	+67	+124	+90	+29	+31	+184	+181

CED	BW	WW	YW	DMI	YH	SC	DOC	HP	CEM	MILK	MW	MH	CW	Marb	RE	Fat	TEND
6	25	62	36	65	39	35	13	85	83	20	59	50	39	7	31	69	73

This appealing daughter of Kansas comes from a third generation Maplecrest donor that was a 2021 sale feature purchased by Chapman Cattle Company of North Carolina and has 26 progeny ribeye ratios of 102. B2119 possesses strong calving ease, and excellent carcass traits. Sells due to calve January 7, 2024 to Connealy Commerce.



Maplecrest Blackcap 7128 - Prolific donor of Lot 17

BRED *Heifers*

19A

Maplecrest Blackcap R2156

BD: 03-17-2022 | Cow **20453806 | Tattoo: R2156

*G A R Ashland

*G A R Early Bird

*G A R Home Town

*Chair Rock Ambush 1018

19266718 *Chair Rock Sure Fire 6095

#*G A R Sure Fire

*Chair Rock Progress 3005

#*Connealy In Sure 8524

#*Mytty In Focus

*Maplecrest Blackcap 3007

Entreena of Conanga 657

17670660 +Maplecrest Blackcap K9283

#TC Total 410

Maplecrest Blackcap 489

CED	BEPD	WEPD	YEPD	SC	DOC	MILK	\$AXH	\$W	\$B	\$C							
+10	+1.1	+69	+135	+1.26	+25	+29	+246	+64	+227	+352							
CED	BW	WW	YW	DMI	YH	SC	DOC	HP	CEM	MILK	MW	MH	CW	Marb	RE	Fat	TEND
9	21	91	27	25	89	16	28	62	60	50	56	75	42	2	4	49	44

This royally bred female posted an IMF ratio of 111 and is a maternal sister to the ST Genetics featured sire G A R Drive. She delivers solid growth traits combined with outstanding carcass merit that you would expect from this mating. Check out her \$G, \$B and \$C indexes. R2156 has been flushed 3 times to average 8 high quality embryos per flush.

Sells due to calve January 7, 2024 to GB Fireball 672.



LOT 19A
Maplecrest Blackcap R2156

19B

Maplecrest Blackcap R2149

BD: 03-16-2022 | Cow **20453805 | Tattoo: R2149

*G A R Ashland

*G A R Early Bird

*G A R Home Town

*Chair Rock Ambush 1018

19266718 *Chair Rock Sure Fire 6095

#*G A R Sure Fire

*Chair Rock Progress 3005

#*Connealy In Sure 8524

#*Mytty In Focus

*Maplecrest Blackcap 3007

Entreena of Conanga 657

17670660 +Maplecrest Blackcap K9283

#TC Total 410

Maplecrest Blackcap 489

CED	BEPD	WEPD	YEPD	SC	DOC	MILK	\$AXH	\$W	\$B	\$C							
+10	-.4	+70	+121	+.90	+30	+21	+207	+66	+190	+320							
CED	BW	WW	YW	DMI	YH	SC	DOC	HP	CEM	MILK	MW	MH	CW	Marb	RE	Fat	TEND
21	15	91	88	3	95	38	9	15	87	84	91	89	84	5	8	15	66

This flush sister to 19A posted an IMF ratio of 117 and writes a similar EPD profile with strong carcass merit and a solid HP EPD. Sells due to calve February 14, 2024 to G A R Fireproof.



Maplecrest Blackcap 3007 - renowned donor for Maplecrest & Hillhouse programs and dam of Lot 19A, 19B & 19C

19C

Maplecrest Blackcap R2148

BD: 03-16-2022 | Cow **20453802 | Tattoo: R2148

*G A R Ashland

*G A R Early Bird

*G A R Home Town

*Chair Rock Ambush 1018

19266718 *Chair Rock Sure Fire 6095

#*G A R Sure Fire

*Chair Rock Progress 3005

#*Connealy In Sure 8524

#*Mytty In Focus

*Maplecrest Blackcap 3007

Entreena of Conanga 657

17670660 +Maplecrest Blackcap K9283

#TC Total 410

Maplecrest Blackcap 489

CED	BEPD	WEPD	YEPD	SC	DOC	MILK	\$AXH	\$W	\$B	\$C							
+12	+3	+58	+99	+.65	+26	+30	+184	+62	+186	+306							
CED	BW	WW	YW	DMI	YH	SC	DOC	HP	CEM	MILK	MW	MH	CW	Marb	RE	Fat	TEND
4	11	94	93	6	86	37	18	47	82	20	82	86	71	2	54	81	80

This third maternal sister to G A R Drive again delivers a strong marbling EPD backed by an individual IMF ratio of 115. Sells due to calve January 28, 2024 to G A R Sunbeam.



BRED *Heifers*



LOT 20
Maplecrest Blackcap 2089



Maplecrest Blackcap R9275 - Lot 58 & Dam of Lot 20



Maplecrest Blackcap 2089

BD: 03-02-2022 | Cow **20377778 | Tattoo: 2089

*G A R Ashland

***G A R Home Town**

19266718

*Chair Rock Sure Fire 6095

*G A R Method

****Maplecrest Blackcap R9275**

19723931

**Maplecrest Blackcap A5237

*G A R Early Bird

*Chair Rock Ambush 1018

**G A R Sure Fire

*Chair Rock Progress 3005

*G A R Momentum

*G A R Daybreak 1332

**G A R Prophet

*Maplecrest Blackcap K2219

CW
+69

MARB
+1.59

RE
+1.07

FAT
+0.19

\$M
+57

\$W
+78



\$AXH
+236

\$AXJ
+234

\$B
+213

\$C
+333

CED	BEPD	WEPD	YEPD	SC	DOC	MILK	\$AXH	\$W	\$B								
+8	+2.3	+90	+153	+11	+27	+25	+236	+78	+213								
CED	BW	WW	YW	DMI	YH	SC	DOC	HP	CEM	MILK	MW	MH	CW	Marb	RE	Fat	TEND
41	70	28	33	40	81	79	15	57	32	50	34	51	25	2	8	47	88



Maplecrest Rita L2173

BD: 02-26-2022 | Cow **20453745 | Tattoo: L2173

*G A R Ashland

***G A R Home Town**

19266718

*Chair Rock Sure Fire 6095

*G A R Momentum

***G A R Momentum N1287**

19083933

*G A R Sure Fire 564

*G A R Early Bird

*Chair Rock Ambush 1018

**G A R Sure Fire

*Chair Rock Progress 3005

**G A R Progress

+G A R Big Eye 1770

**G A R Sure Fire

*G A R Complete N281



\$AXH
+249

\$W
+68

\$B
+228

\$C
+346

CED	BEPD	WEPD	YEPD	SC	DOC	MILK	\$AXH	\$W	\$B								
+12	+1.6	+76	+144	+1.29	+31	+27	+240	+68	+228								
CED	BW	WW	YW	DMI	YH	SC	DOC	HP	CEM	MILK	MW	MH	CW	Marb	RE	Fat	TEND
7	37	71	28	40	82	14	8	73	70	33	60	69	24	2	30	27	79

This daughter of Home Town is a maternal sister to the \$38,000 top-selling female at a past Maplecrest production sale and is working as a donor in the Butz-Hill program in Iowa. L2173 features a nice blend of calving ease and solid growth with elite marbling and \$B and \$C indexes. Sells bred to GB Fireball on May 17 and exposed to Pamer MC Touchdown 003.



G A R Home Town - popular sire of Lot 21



G A R Momentum N1287 - Dam of Lot 21

BRED Heifers

22A **Maplecrest Blackcap B2135**
 BD: 03-08-2022 | Cow **20453764 | Tattoo: B2135

*G A R Home Town
 19266718

*G A R Ashland
 *Chair Rock Sure Fire 6095

*G A R Early Bird
 *Chair Rock Ambush 1018
 #*G A R Sure Fire
 *Chair Rock Progress 3005
 #C R A Bextor 872 5205 608
 +G A R Objective 1885
 #+B/R Ambush 28
 +G A R Predestined 2786

CW	+51
MARB	+1.67
RE	+0.88
FAT	+0.22
\$M	+84
\$W	+78
\$B	+187
\$C	+327

CED	BEPD	WEPD	YEPD	SC	DOC	MILK	\$AXH	\$W
+9	+1.0	+76	+124	-17	+24	+30	+202	+78
\$AXJ	\$B	\$C						
+190	+187	+327						

CED	BW	WW	YW	DMI	YH	SC	DOC	HP	CEM	MILK	MW	MH	CW	Marb	RE	Fat	TEND
26	39	70	85	25	92	87	46	11	20	35	77	81	75	1	44	63	81

The dam of these flush sisters is an outstanding daughter of Prophet who has been a strong contributor to our program. B2135's "front pasture" looks are complimented by an impressive EPD profile including elite Marbling, strong \$ Indexes and a recognizable pedigree. Her granddam is the noted Maplecrest and Hillhouse donor G A R 28 Ambush N340 who produced G A R Ingenuity 3132. F5247 has amassed an impressive production record of 2 at 110 for weaning and 105 for yearling with 45 at 106 for IMF and 103 for ribeye. Sells due to calve February 21, 2024 to GB Fireball 672.



G A R 28 Ambush N340 - Granddam of Lots 22A, 22B & 22C.
 One of the very best cows to ever reside at Maplecrest



Maplecrest Blackcap F5247 - Dam of Lots 22A, 22B & 22C

22B **Maplecrest Blackcap B2133**
 BD: 03-12-2022 | Cow **20453762 | Tattoo: B2133

*G A R Home Town
 19266718

*G A R Ashland
 *Chair Rock Sure Fire 6095

*G A R Early Bird
 *Chair Rock Ambush 1018
 #*G A R Sure Fire
 *Chair Rock Progress 3005
 #C R A Bextor 872 5205 608
 +G A R Objective 1885
 #+B/R Ambush 28
 +G A R Predestined 2786

CW	+47
MARB	+1.78
RE	+0.94
FAT	+0.17
\$M	+60
\$W	+77
\$B	+198
\$C	+317

CED	BEPD	WEPD	YEPD	SC	DOC	MILK	\$AXH	\$W
+14	+2	+65	+113	+79	+17	+40	+210	+77
\$AXJ	\$B	\$C						
+199	+198	+317						

CED	BW	WW	YW	DMI	YH	SC	DOC	HP	CEM	MILK	MW	MH	CW	Marb	RE	Fat	TEND
18	39	89	78	23	90	26	83	84	84	2	92	91	82	1	30	61	64

This flush sister to Lot 22A posted an IMF ratio of 113 and delivers more calving ease and similar elite Marbling. Sells due to calve January 7, 2024 to E & B Wildcat 9402.

22C **Maplecrest Blackcap R2169**
 BD: 03-17-2022 | Cow **20453776 | Tattoo: R2169

*G A R Home Town
 19266718

*G A R Ashland
 *Chair Rock Sure Fire 6095

*G A R Early Bird
 *Chair Rock Ambush 1018
 #*G A R Sure Fire
 *Chair Rock Progress 3005
 #C R A Bextor 872 5205 608
 +G A R Objective 1885
 #+B/R Ambush 28
 +G A R Predestined 2786

CW	+47
MARB	+1.70
RE	+1.02
FAT	+0.24
\$M	+74
\$W	+73
\$B	+181
\$C	+309

CED	BEPD	WEPD	YEPD	SC	DOC	MILK	\$AXH	\$W
+12	+1.2	+73	+122	+58	+25	+29	+179	+73
\$AXJ	\$B	\$C						
+180	+181	+309						

CED	BW	WW	YW	DMI	YH	SC	DOC	HP	CEM	MILK	MW	MH	CW	Marb	RE	Fat	TEND
15	51	81	74	63	68	50	44	30	37	26	68	42	86	2	21	50	53

Proven genetics deliver predictable results as you see a similar EPD profile in this third flush sister who posted individual ultrasound ratios of 132 for IMF and 114 for ribeye. Due to calve January 30, 2024 to Connealy Commerce.



Maplecrest Blackcap R0163 - Maternal sister to the dam of Lots 22A, 22B & 22C

BRED *Heifers*



LOT 23
Maplecrest Blackcap 2016



Maplecrest Blackcap R0163 -
Donor Dam of Lot 23

23 Maplecrest Blackcap 2016
 BD: 02-02-2022 | Cow *20380158 | Tattoo: 2016
 #*G A R Sunrise #MCC Daybreak
 #*G A R Sunbeam #*G A R Objective R227
 18636166 *G A R Ingenuity 3132 #*G A R Ingenuity
 #*G A R 28 Ambush N340
 *Connealy Emerald #*Connealy Confidence Plus
***Maplecrest Blackcap R0163** Jace of Conanga 6571
 19885700 *Maplecrest Blackcap FS247 #*G A R Prophet
 #*G A R 28 Ambush N340

CED	BEPD	WEPD	YEPD	SC	DOC	MILK	\$AXH	CW										
+12	+1.3	+80	+148	+35	+26	+31	+173	+55										
CED	BW	WW	YW	DMI	YH	SC	DOC	HP	CEM	MILK	MW	MH	CW	Marb	RE	Fat	TEND	\$B
7	32	61	26	80	67	69	23	4	50	23	69	60	77	8	2	15	32	+178
																		\$C
																		+321

2016 is a perfect example of why we are so excited about the progeny of Sunbeam. They are ultra-complete and hard not to like. We are confident you will like the blend of phenotype and genetic profile with this female. Her dam by Emerald is one of the most productive young donors that we have. Check out her excellent blend of calving ease and growth, elite HP EPD, positive carcass merit, and well-balanced \$ Index profile. Due to calve February 11, 2024 to G A R Fireproof.

24 Maplecrest Rita 2015
 BD: 12-23-2021 | Cow *20377765 | Tattoo: 2015
 #*G A R Sunrise #MCC Daybreak
 #*G A R Sunbeam #*G A R Objective R227
 18636166 *G A R Ingenuity 3132 #*G A R Ingenuity
 #*G A R 28 Ambush N340
 #*Stevenson Turning Point #*Plattmire Weigh Up K360
***Maplecrest Rita L0193** #*Stevenson Pride 1167x
 19887172 *Maplecrest Rita 2026 #*Connealy Confidence 0100
 #Maplecrest Rita M546

CED	BEPD	WEPD	YEPD	SC	DOC	MILK	\$AXH	CW										
+17	-2.2	+59	+102	+80	+23	+29	+183	+47										
CED	BW	WW	YW	DMI	YH	SC	DOC	HP	CEM	MILK	MW	MH	CW	Marb	RE	Fat	TEND	\$B
1	4	88	85	10	90	49	30	32	46	40	95	99	67	19	13	20	95	+169
																		\$C
																		+303

Rita 2015 comes from one of the most productive and recognized cow families in our herd. Check out her balanced EPD profile. Her second dam, 2026, boasts an impressive production record of WR 5@105, YR 4@106, and REA 40@101. 2026 has also produced the top-selling heifer at three previous Maplecrest online show heifer sales. The most recent of these heifers, Maplecrest Rita 0231, has had a successful show career being named Reserve Grand Champion Owned Female at the 2022 Mid-Atlantic Junior Angus Classic and Senior Champion Owned Female at the 2022 Eastern Regional Junior Angus Show for Mattie Harward of North Carolina. Due to calve January 7, 2024 to G A R Apex.

25 Maplecrest Blackcap 1331
 BD: 10-09-2021 | Cow *20320526 | Tattoo: 1331
 #*G A R Momentum #*G A R Progress
 #*G A R Quantum #G A R Big Eye 1770
 18636059 #*G A R In Sure 1524 #*Connealy In Sure 8524
 #*G A R Complete 3011
 #*G A R Combustion #*G A R Sure Fire
***Maplecrest Blackcap 9237** #*G A R Momentum 1724
 19701386 #*Maplecrest Blackcap L7080 #*G A R 100X
 #*G A R 28 Ambush N340

CED	BEPD	WEPD	YEPD	SC	DOC	MILK	\$AXH	CW										
+9	+7	+69	+130	+1.10	+21	+39	+207	+72										
CED	BW	WW	YW	DMI	YH	SC	DOC	HP	CEM	MILK	MW	MH	CW	Marb	RE	Fat	TEND	\$B
19	24	60	27	83	56	29	39	19	47	6	61	42	9	21	3	47	67	+199
																		\$C
																		+326

This daughter of Quantum possesses a sire stack of featured bulls in the Select Sires lineup. She also traces directly to the N340 donor. 1331 displays a balanced EPD profile of the economically important traits. She also boasts a solid set of \$ Indexes. Due to calve January 7, 2024 to E&B Wildcat.



LOT 25
Maplecrest Blackcap 1331

BRED *Heifers*

26A **Maplecrest Rita B2125**
 BD: 03-11-2022 | Cow ****20450289** | Tattoo: B2125

*G A R Momentum #*G A R Progress
 +*G A R Quantum +G A R Big Eye 1770
 18636059 +*G A R In Sure 1524 #*Connealy In Sure 8524
 #*G A R Complete 3011

#*Connealy Confidence Plus #*Connealy Confidence 0100
***KW 5377 Confidence Plus 7254** Elbanna of Conanga 1209
 18868941 +*KW 751 Trust 5377 #*SydGen Trust 6228
 +Goode Objective 751

CW	+62
MARB	+96
RE	+1.26
FAT	+0
\$M	+64
\$AXH	\$W
+170	+80
\$AXJ	\$B
+188	+179
\$C	+296

CED	BEPD	WEPD	YEPD	SC	DOC	MILK	\$AXH	\$W	\$AXJ	\$B	\$C
+3	+2.8	+82	+144	+66	+23	+35	+170	+80	+188	+179	+296

CED	BW	WW	YW	DMI	YH	SC	DOC	HP	CEM	MILK	MW	MH	CW	Marb	RE	Fat	TEND
68	72	28	37	51	35	56	48	64	88	26	50	43	33	19	2	57	80



Here is the first of a pair of Quantum flush sisters produced by a Confidence Plus daughter that served as a donor for us. This one posted an individual ribeye ratio of 115 and offers explosive growth with solid carcass merit and an appealing set of \$Indexes.
 Due to calve February 17, 2024 to GB Fireball 672.

26B **Maplecrest Rita B2123**
 BD: 03-10-2022 | Cow ****20450288** | Tattoo: B2123

*G A R Momentum #*G A R Progress
 +*G A R Quantum +G A R Big Eye 1770
 18636059 +*G A R In Sure 1524 #*Connealy In Sure 8524
 #*G A R Complete 3011

#*Connealy Confidence Plus #*Connealy Confidence 0100
***KW 5377 Confidence Plus 7254** Elbanna of Conanga 1209
 18868941 +*KW 751 Trust 5377 #*SydGen Trust 6228
 +Goode Objective 751

CW	+39
MARB	+1.07
RE	+93
FAT	+0.10
\$M	+77
\$AXH	\$W
+153	+67
\$AXJ	\$B
+153	+158
\$C	+282

CED	BEPD	WEPD	YEPD	SC	DOC	MILK	\$AXH <th>\$W</th> <th>\$AXJ</th> <th>\$B</th> <th>\$C</th>	\$W	\$AXJ	\$B	\$C
+13	+3	+59	+107	+20	+26	+32	+153	+67	+153	+158	+282

CED	BW	WW	YW	DMI	YH	SC	DOC	HP	CEM	MILK	MW	MH	CW	Marb	RE	Fat	TEND
5	19	87	82	25	52	79	35	50	94	26	90	74	76	24	18	65	68



This Quantum daughter posted a ribeye ratio of 107 and possesses more calving ease with similar carcass merit to her flush sister.
 Due to calve January 7, 2024 to G A R Fireproof.

27 **Maplecrest Blackcap 2022**
 BD: 01-09-2022 | Cow ****20377766** | Tattoo: 2022

*G A R Momentum #*G A R Progress
 +*G A R Quantum +G A R Big Eye 1770
 18636059 +*G A R In Sure 1524 #*Connealy In Sure 8524
 #*G A R Complete 3011

+*G A R Ashland *G A R Early Bird
***Maplecrest Blackcap R9146** +*Chair Rock Ambush 1018
 19572156 +*Maplecrest Blackcap A5237 #*G A R Prophet
 +*Maplecrest Blackcap K2219

CW	+58
MARB	+1.00
RE	+90
FAT	+0.029
\$M	+71
\$AXH	\$W
+184	+74
\$AXJ	\$B
+182	+171
\$C	+293

CED	BEPD	WEPD	YEPD	SC	DOC	MILK	\$AXH <th>\$W</th> <th>\$AXJ</th> <th>\$B</th> <th>\$C</th>	\$W	\$AXJ	\$B	\$C
+14	+0	+81	+143	+62	+28	+23	+184	+74	+182	+171	+293

CED	BW	WW	YW	DMI	YH	SC	DOC	HP	CEM	MILK	MW	MH	CW	Marb	RE	Fat	TEND
1	3	67	55	63	92	64	19	25	64	74	59	51	59	23	54	95	82



Another Quantum daughter that was produced by a past Maplecrest donor that sold to Johnson Angus Ranch in Connecticut. 2022 possesses a solid blend of calving ease and growth traits.
 Due to calve February 13, 2024 to G A R Apex.

BRED *Heifers*



LOT 28
Maplecrest Rita 1303



G A R Ashland 1198 - Dam of Lot 28



Maplecrest Rita 1303

BD: 09-11-2021 | Cow ***20320516** | Tattoo: 1303

*G A R Momentum

****G A R Quantum**

18636059 *G A R In Sure 1524

*G A R Ashland

****G A R Ashland 1198**

19266300 *G A R Sunrise N816

#*G A R Progress

+G A R Big Eye 1770

#*Connealy In Sure 8524

*G A R Complete 3011

*G A R Early Bird

*Chair Rock Ambush 1018

#*G A R Sunrise

*G A R 28 Ambush 3162



CW	+59
MARB	+1.03
RE	+1.02
FAT	-.017
\$M	+54
\$W	+81
\$AXH	+139
\$B	+182
\$C	+171

CED	BEPD	WEPD	YEPD	SC	DOC	MILK	\$AXJ	\$B										
+9	+1.9	+88	+148	+1.14	+20	+29	+182	+171										
CED	BW	WW	YW	DMI	YH	SC	DOC	HP	CEM	MILK	MW	MH	CW	Marb	RE	Fat	TEND	\$C
13	25	38	53	42	20	17	66	85	79	44	30	10	57	25	13	20	99	+276

Rita 1303 posted individual ratios of 107 for IMF and 106 for ribeye and offers explosive growth with solid carcass merit. Her productive donor dam was sold as a feature in our 2022 sale to Walkers Branch Angus in North Carolina. Due to calve January 7, 2024 to G A R Apex.



Maplecrest Rita R2163

BD: 03-13-2022 | Cow ***20450295** | Tattoo: R2163

*G A R Momentum

****G A R Transcendent**

19570738 *G A R Prophet 2685

*G A R Ashland

****Maplecrest Rita D0133**

19887108 *G A R Prophet R65

#*G A R Progress

+G A R Big Eye 1770

#*G A R Prophet

*G A R Daybreak 2842

*G A R Early Bird

*Chair Rock Ambush 1018

#*G A R Prophet

*G A R Daybreak 82



CW	+65
MARB	+1.68
RE	+0.98
FAT	-.007
\$M	+60
\$W	+79
\$AXH	+241
\$B	+221
\$C	+209

CED	BEPD	WEPD	YEPD	SC	DOC	MILK	\$AXJ	\$B										
+11	+1.2	+83	+140	+0.25	+17	+27	+221	+209										
CED	BW	WW	YW	DMI	YH	SC	DOC	HP	CEM	MILK	MW	MH	CW	Marb	RE	Fat	TEND	\$C
25	36	41	66	61	90	74	86	69	70	41	43	41	35	1	23	41	100	+331

Here is a Transcendent daughter that possesses a nice balance of calving ease and growth while delivering the expected carcass excellence from her sire. Her granddam produced the Reserve Grand Champion Carcass Steer at the 2023 National Junior Angus Show.

Due after March 13, 2024 to G A R Grass Roots.



Maplecrest Blackcap 1319

BD: 09-18-2021 | Cow ***20320522** | Tattoo: 1319

#*Connealy Confidence Plus

***Connealy Emerald**

19257149 Jace of Conanga 6571

#*G A R Sure Fire

****Maplecrest Blackcap B9104**

19572726 *Maplecrest Blackcap F5247

#*Connealy Confidence 0100

Elbanna of Conanga 1209

#*Connealy Armory

+Jazzy of Conanga 4660 860C

#*Connealy In Sure 8524

+Chair Rock 5050 G A R 8086

#*G A R Prophet

*G A R 28 Ambush N340

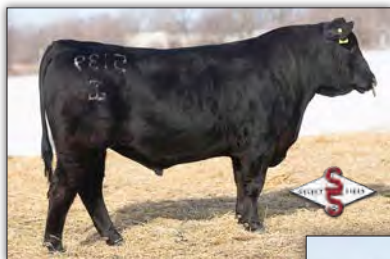


CW	+52
MARB	+0.91
RE	+1.09
FAT	+0.013
\$M	+103
\$W	+76
\$AXH	+180
\$B	+171
\$C	+167

CED	BEPD	WEPD	YEPD	SC	DOC	MILK	\$AXJ	\$B										
+11	-.7	+70	+119	+0.30	+20	+24	+171	+167										
CED	BW	WW	YW	DMI	YH	SC	DOC	HP	CEM	MILK	MW	MH	CW	Marb	RE	Fat	TEND	\$C
4	3	43	62	38	78	73	63	22	30	69	90	84	42	43	3	45	34	+320

Emerald daughters are making beautiful cows with moderate stature, ample capacity, and ideal udders. Her Maternal EPD profile combined with her \$Maternal in the top 1% indicate positive brood cow potential. Her granddam is the highly productive F5247 donor who has a production record of 2 at 110 for weaning and 105 for yearling with 45 at 106 for IMF and 103 for ribeye.

Due to calve January 28, 2024 to G A R Fireproof.



G A R Transcendent -
High Marbling Sire of
Lot 29



G A R Prophet R65 -
Granddam of Lot 29

BRED Heifers

31 **Maplecrest Rita 1273**
 BD: 10-13-2021 | Cow *20322841 | Tattoo: 1273

*Deer Valley Growth Fund
****Deer Valley Optimum 9246**
 19466633 *G A R Progress 830

*K C F Bennett Fortress
***Maplecrest Rita 8239**
 19429447 *Maplecrest Rita 5192

##Basin Payweight 1682
 *Deer Valley Rita 36113
 ##*G A R Progress
 G A R 111 Rito 3346
 ##Connealy Consensus
 *Thomas Patricia 9705
 *G A R Fast Break
 *Maplecrest Rita 2150

CW	+52
MARB	+1.47
RE	+54
FAT	+0.37
\$M	+51
\$W	+51
\$AXH	+167
\$AXJ	+144
\$B	+196
\$C	+305

CED	BEPD	WEPD	YEPD	SC	DOC	MILK	\$AXH	\$W	\$B	\$C								
+11	+1.1	+58	+117	+1.09	+24	+27	+144											
CED	BW	WW	YW	DMI	YH	SC	DOC	HP	CEM	MILK	MW	MH	CW	Marb	RE	Fat	TEND	\$C
14	34	92	28	66	39	31	12	72	36	58	40	24	63	1	83	87	88	+305

This daughter of the Select Sires feature Deer Valley Optimum posted an individual IMF ratio of 115 and delivers solid calving ease, impressive Marbling, and positive \$Beef and \$Combined Indexes.
 Due to calve January 7, 2024 to E&B Wildcat 9402.

33 **Maplecrest TD Blackcap 2037**
 BD: 01-05-2022 | Cow *20380572 | Tattoo: 2037

*G A R Ashland
****G A R Greater Good**
 19362382 *G A R Sure Fire A5008

*G A R Early Bird
 *Chair Rock Ambush 1018
 ##*G A R Sure Fire
 *G A R Mandate A2011
 ##*Quaker Hill Rampage 0A36
 Maplecrest Eva 7010
 ##*G A R Ingenuity
 *G A R 28 Ambush N340

*G A R Storm
***Maplecrest Blackcap 8308**
 19429350 *G A R Ingenuity 3132

CW	+50
MARB	+1.47
RE	+68
FAT	-.018
\$M	+63
\$W	+73
\$AXH	+148
\$AXJ	+136
\$B	+174
\$C	+289

CED	BEPD	WEPD	YEPD	SC	DOC	MILK	\$AXH	\$W	\$B	\$C								
+15	-.1	+78	+137	+5.4	+6	+24	+136											
CED	BW	WW	YW	DMI	YH	SC	DOC	HP	CEM	MILK	MW	MH	CW	Marb	RE	Fat	TEND	\$C
7	30	50	28	90	51	66	95	57	89	77	56	47	64	3	53	21	87	+289

Owned with Tad Dodderer, Johnstown, OH.
 Here is a daughter of the featured ST Genetics sire G A R Greater Good. This female posted individual ratios of 103 for birth, 121 for weaning, 118 for yearling, 102 for IMF and 105 for ribeye. Note that her dam is a daughter of G A R Ingenuity 3132 who has over \$800,000 in progeny sales. She combines elite calving ease, solid growth traits and extra Marbling.
 Due to calve January 7, 2024 to G A R Apex.

32 **Maplecrest Vallee 2069**
 BD: 02-14-2022 | Cow *20377772 | Tattoo: 2069

*G A R Sure Fire
****G A R Dual Threat**
 19123898 *G A R Daybreak A3010

*Connealy Emerald
***Maplecrest Vallee 0073**
 19885669 *Maplecrest Vallee B8134

##Connealy In Sure 8524
 *Chair Rock 5050 G A R 8086
 ##MCC Daybreak
 *G A R 5050 New Design A91
 ##Connealy Confidence Plus
 Jace of Conanga 6571
 ##*G A R Sunrise
 *Carter's Vallee X126

CW	+54
MARB	+93
RE	+1.08
FAT	-.010
\$M	+71
\$W	+73
\$AXH	+177
\$AXJ	+176
\$B	+173
\$C	+295

CED	BEPD	WEPD	YEPD	SC	DOC	MILK	\$AXH	\$W	\$B	\$C								
+2	+1.9	+80	+137	+9.5	+39	+25	+176											
CED	BW	WW	YW	DMI	YH	SC	DOC	HP	CEM	MILK	MW	MH	CW	Marb	RE	Fat	TEND	\$C
63	27	33	41	51	78	34	1	39	87	77	30	55	57	18	7	37	56	+295

This daughter of G A R Dual Threat was produced by an Emerald daughter. 2069 features positive growth traits and a high-ranking Ribeye EPD. The third dam of this female is a past Ohio State Fair Grand Champion Female and All-American Futurity Grand Champion Cow-Calf Pair.
 Due to calve January 6, 2024 to G A R Home Free.



SIM-ANGUS *Bred Heifers*



LOT 34
Maplecrest Vixon 216K



LOT 35
Maplecrest Rita 204K



MAPLECREST VIXON 216K

BD: 01-10-2022 | Cow 4152976 | Tattoo: 216K

PROFIT

WS PILGRIM H182U

TL LEDGER
3240219

MISS STAR ABOVE

WAGR PANARAMA 204Z

FLYING B CUT ABOVE

MISS STAR BRIGHT

SVF STEEL FORCE S701

MS MEYER 3151 OF TH

BON VIEW NEW DESIGN 1407

SHAMROCK VALE BAR EXT 1174

DWL VICTORIA SECRET Z208

2736058 SHAMROCK VALE 1407 5067

CED	BEPD	WEPD	YEPD	DOC	CEM	MILK	STAY	CW
+10	+1.6	+68	+98.2	N/A	+5.6	+19.7	+13.6	+15.1

It isn't by chance or coincidence that we started our Simmental offering with this striking baldy. 216K is an attractive daughter of the popular TL Ledger. At 11 years young, the dam of this heifer continues to earn her keep by producing high selling bulls in our bull sale and some of our favorite replacements year in and year out! Longevity and profitability is bred into this one.

She is a 3/4 blood due January 8, 2024 to THSF Lover Boy.



MAPLECREST RITA 206K

BD: 01-01-2022 | Cow 4152961 | Tattoo: 206K

HOOVER DAM

SYDGEN C C & 7

CCR BOULDER 1339A

2880390 CCR MS L TAYLOR 1339Y

W/C LOCK DOWN 206Z

MAPLECREST RITA 016H

3828058 MAPLECREST RITA 820F

ERICA OF ELLSTON C124

TRIPLE C L TAYLOR

CCR 0135 STAR 7103T

REMINGTON LOCK N LOADS4U

G C F MISS NEW LEVELR206

CCR COWBOY CUT 5048Z

MAPLECREST RITA 151Y

CED	BEPD	WEPD	YEPD	DOC	CEM	MILK	STAY	CW
+13.7	-1.3	+77.5	+116.8	N/A	+8.8	+24.2	+14	+30.6

Here is a high quality daughter of the calving ease specialist, CCR Boulder. This freak necked heifer is a prime example of this year's sale theme - Family First. As a product of the Rita family, she is backed by some of our most productive Simmental and Angus cows in the history of our program. To further solidify her value, she is and ranks in the top 30% for both API and TI.

206K is a 5/8 Simmental and is due January 27, 2024 to THSF Lover Boy.



MAPLECREST RITA 204K

BD: 01-01-2022 | Cow 4152974 | Tattoo: 204K

HTP/SVF DURACELL T52

CNS DREAM ON L186

THSF LOVER BOY B33
2983443

RP/MP RIGHT TO LOVE 015U

CCR COWBOY CUT 5048Z

MAPLECREST RITA 039H

3861447 G A R 28 AMBUSH 1949

HTP SVF HONEYDEW

SVF/NJC BUILT RIGHT N48

PCC QUEENS VALENTINE R9

TRIPLE C SINGLETARY S3H

CCR MS 4045 TIME 7322T

B/R AMBUSH 28

G A R OBJECTIVE 1885

CED	BEPD	WEPD	YEPD	DOC	CEM	MILK	STAY	CW
+13.2	+0.3	+89.6	+131.5	N/A	+7.1	+25.6	+14.2	+37.8

204K is a big bodied, easy fleshing daughter of the calving ease and performance leader, THSF Lover Boy. This phenotypic standout also finds herself in the top 10% for marbling and the top 15% for weaning weight and API.

This 3/4 blood is due January 29, 2024 to CCR Boulder.



SIM-ANGUS *Bred Heifers*

37 MAPLECREST BLACKCAP 219K

BD: 01-28-2022 | Cow 4152966 | Tattoo: 219K

W/C LOADED UP 119Y
GEFF COUNTY O
 3289219 RUBY NFF RHYTHM 475B

TC TOTAL 410
MAPLECREST BLACKCAP 6P564
 3072936 G A R PLOWMAN G270

REMINGTON LOCK N LOAD54U
 AUBREYS BLACK BLAZE III
 AJE/PB MONTECITO 63W
 RHYTHM 418P
 BON VIEW NEW DESIGN 208
 TC ERICA EILEEN 2047
 PLOWMAN 1627 OF MILLBRAE SAR
 G A R PRECISION 2536

CW	+39.6
MARB	+0.42
RE	+0.62
FAT	-0.042
API	+128
TI	+75.2

CED	BEPD	WEPD	YEPD	DOC	CEM	MILK	STAY	TI
+4.3	+3.6	+77.7	+126.3	N/A	+1.5	+11.9	+18	

Here is a fault free, well balanced daughter of the popular GEFF County O and our infamous Angus donor, 6P564. The Blackcap cow family needs no introduction in our program, so bid with confidence that 219K will undoubtedly add value to your program. Longevity and performance is in the blood!

This 1/2 blood female is due January 8, 2024 to CCR Boulder.



Maplecrest Vixon 708E - Dam of Lot 39 and top selling Simmental bred cow in our 2022 sale

38 HALL MC BLACK STAR K203

BD: 01-31-2022 | Cow 4150585 | Tattoo: K203

HTP/SVF DURACELL T52
THSF LOVER BOY B33
 2983443 RP/MP RIGHT TO LOVE 015U

WLE COPACETIC E02
HALL MC BLACK STAR H001
 3862412 HALLS BLACK STAR X03

CNS DREAM ON L186
 HTP SVF HONEYDEW
 SVF/NJC BUILT RIGHT N48
 PCC QUEENS VALENTINE R9
 HPF QUANTUM LEAP Z952
 CMFM JOY 02ZB
 CNS DREAM ON L186
 CNS BLACK STAR T702

CW	+21.3
MARB	+0.23
RE	+0.78
FAT	-0.083
API	+136.8
TI	+83.8

CED	BEPD	WEPD	YEPD	DOC	CEM	MILK	STAY	TI
+11.3	+1.4	+83	+120.5	N/A	+4.6	+26.6	+15.2	

This attractive made, long bodied heifer is sired by the popular THSF Lover Boy and goes back to the nationally popular and highly productive Black Star cow family. We haven't parted with many females out of the Black Star cow family as we have been using to build our purebred herd. Capitalize on this rare opportunity to snag one for yourself. The possibilities for what this one could produce are endless.

This purebred is due January 8, 2024 to WHF Double Up.



G A R 28 Ambush 1949 - Granddam of Lot 40



LOT 37

Maplecrest Blackcap 219K

39 MAPLECREST VIXON 207K

BD: 01-07-2022 | Cow 4152965 | Tattoo: 207K

TJ MAIN EVENT 503B
CDI INNOVATOR 325D
 3152448 CDI MS SHEAR FORCE 49U

W/C LOCK DOWN 206Z
MAPLECREST VIXON 708E
 3249415 DWL VICTORIA SECRET Z208

MR NLC UPGRADE U8676
 TJ MISS NEW DAY U14
 HOOKS SHEAR FORCE 38K
 CDI MS SAVANNA 3R
 REMINGTON LOCK N LOAD54U
 G C F MISS NEW LEVELR206
 ZKCC CHOPPER 844U
 SHAMROCK VALE 1407 5067

CW	+42.6
MARB	+0.48
RE	+0.85
FAT	-0.03
API	+136.6
TI	+87.6

CED	BEPD	WEPD	YEPD	DOC	CEM	MILK	STAY	TI
+11.1	+0.6	+85.7	+132.5	N/A	+6.4	+25.7	+12.4	

Here is a high-quality daughter of the popular Denver Champion bull, CDI Innovator 325D. This bold sprung female is a direct daughter of our high selling bred Simmental cow in last year's production sale. 207K ranks in the top 25% for WW and YW and top 20% for TI.

This 5/8 heifer is due January 8, 2024 to CCR Boulder.



LOT 38

Hall MC Black Star K203

40 MAPLECREST RITA 202K

BD: 01-01-2022 | Cow 4152973 | Tattoo: 202K

HOOVER DAM
CCR BOULDER 1339A
 2880390 CCR MS L TAYLOR 1339Y

HPF QUANTUM LEAP Z952
MAPLECREST RITA 035H
 3861444 G A R 28 AMBUSH 1949

SYDGEN C C & 7
 ERICA OF ELLSTON C124
 TRIPLE C L TAYLOR
 CCR 0135 STAR 7103T
 HTP/SVF DURACELL T52
 RP/MP RIGHT TO LOVE 015U
 B/R AMBUSH 28
 G A R OBJECTIVE 1885

CW	+23.1
MARB	+0.51
RE	+0.47
FAT	-0.065
API	+136.2
TI	+78.6

CED	BEPD	WEPD	YEPD	DOC	CEM	MILK	STAY	TI
+15	-1.9	+65	+96.8	N/A	+8.6	+18.2	+10.9	

This attractive daughter of CCR Boulder ranks in the top 20% for CE, BW and Marbling.

This 1/2 blood heifer is due February 16, 2024 to the popular ST Genetics sire, OMF Epic.

SIM-ANGUS *Bred Cows*



LOT 41
Maplecrest Vallee 862F



LOT 42
Maplecrest Fanny 880F



MAPLECREST VALLEE 862F

BD: 09-10-2018 | Cow 3604434 | Tattoo: 862F

HALLS CONFIDENCE A30
2852652

HALLS BLACK STAR X03

MR HOC BROKER

MAPLECREST VALLEE 652D

3282232 CARTER'S VALLEE X126

CONNEALY TOBIN
BECKA GALA OF CONANGA 8281
CNS DREAM ON L186
CNS BLACK STAR T702
SVF STEEL FORCE S701
JM BF H25
SA V PIONEER 7301
WK VALLEE 8140

CW	+25.9
MARB	+0.2
RE	+0.6
FAT	-0.016
API	+129.8
TI	+75.6

CED	BEPD	WEPD	YEPD	DOC	CEM	MILK	STAY	TI
+13.8	+0.3	+76.7	+118.7	N/A	+7.8	+26.9	+16.8	+75.6

The Vallee cow family continuously brings to the table elite phenotype with superior growth and performance and 862F is all that, and then some! Backed by National Champions on both sides of her pedigree, this Halls Confidence daughter is the epitome of the Simmental females we aim to create.

This 1/2 blood cow is due January 11, 2024 to WHF Double Up.



Carter's Vallee X126 - Granddam of Lot 41



MAPLECREST FANNY 880F

BD: 09-05-2018 | Cow 3604435 | Tattoo: 880F

LLSF PAYS TO BELIEVE ZU194
2659897

CNS PAYS TO DREAM T759

LLSF URABABYDOLL U194

CONNEALY CONFIDENCE 0100

SJH MS CONFIDENCE 170
3606239

2 BAR MILE HIGH 9360

CNS DREAM ON L186
MLF BL JESSIE K336
GWS EBONYS TRADEMARK 6N
JBS ROCKIN ROBIN R194
CONNEALY TOBIN
BECKA GALA OF CONANGA 8281
RIVERBEND MILE HIGH 3718
2 BAR OBJECTIVE 863

CW	+32.7
MARB	+0.44
RE	+0.62
FAT	-0.002
API	+130.9
TI	+79

CED	BEPD	WEPD	YEPD	DOC	CEM	MILK	STAY	TI
+12.8	+0.2	+73.6	+111.7	N/A	+8.1	+22.2	+12.1	+79

We aren't saying we kept best for last but 880F is a maternal sister to Lot 55. Lot 55 is the highlight of our fall-calving division in this year's offering and is also the dam of the record-selling Maplecrest Fanny 0063, from our 2021 sale that sold to Baldrige Performance Angus. 880F is also the dam to our high selling Simmental bred heifer in last year's sale going to long-time, valued customer JD Cunningham of WV. Don't miss out on this moderate made, sound structured female that always weans one of our best calves year after year.

This 1/2 blood is due January 11, 2024 to WLE Copacetic.



SJH Ms Confidence 170 - Our Foundation Fanny & dam of Lot 42

WE WORK BETTER TOGETHER

MAPLECREST FARMS IS A **PARTNER** AS A TRANS OVA SATELLITE

Looking for IVF services closer to home?
Maplecrest Farms offers an exciting
opportunity for cattle producers in
Southern Ohio. Contact Maplecrest or
Trans Ova for more information or to
schedule your donors!

The Trans Ova toolbox is full of reproductive
tools to help clients achieve the goals
they've set out to accomplish.
The Trans Ova team is proud to contribute
and share in the success of the
Maplecrest Farms program.

VISIT OUR **OPEN HOUSE** AT MAPLECREST ON SEPTEMBER 22!

Watch our social media channels
@maplecrestangus & @transovagenetics
for more information in September!

MULTIPLY SUCCESS®

TRANS  **OVA**
genetics

BRED Cows



LOT 43A
Maplecrest Rita 9179

G A R Prophet 1754 - High Growth
Dam of Lots 43A & 43B



43A Maplecrest Rita 9179
 BD: 08-09-2019 | Cow ****19703451** | Tattoo: 9179

#*V A R Discovery 2240 #*A A R Ten X 7008 S A
 #**MGR Treasure #*Deer Valley Rita 0308
 18156972 #*SJH Impression of 6108 1614 +*DRMCTR III Rita 6108
 #*G A R Prophet #C R A Bextor 872.5205 608
****G A R Prophet 1754** +*G A R Objective 1885
 17965274 #*G A R Daybreak C80 #MCC Daybreak
 +*G A R Objective 277L

CW	+62
MARB	+1.07
RE	+72
FAT	+0.28
\$M	\$73
\$W	+79
\$AXH	+141
\$AXJ	+147
\$B	+170
\$C	+293

CED	BEPD	WEPD	YEPD	SC	DOC	MILK	\$AXH	\$AXJ	\$B	\$C								
+14	-5	+79	+148	+73	+14	+33	+141	+147	+170	+293								
CED	BW	WW	YW	DMI	YH	SC	DOC	HP	CEM	MILK	MW	MH	CW	Marb	RE	Fat	TEND	\$C
24	44	36	9	85	39	46	66	17	1	14	49	60	45	14	59	78	74	+293

We lead off the spring bred cow division with this attractive daughter of MGR Treasure. Her appealing phenotype was verified as Carly Sanders exhibited her at the 2020 Ohio Angus Junior Preview Show where she was named Grand Champion PGS Female as well as Reserve Grand Champion Female. 9179 has an impressive calving ease to growth spread that can help you create desirable seedstock. Due to calve January 10, 2024 to HPCA Veracious.



43B Maplecrest Rita D0146
 BD: 02-15-2020 | Cow ****19887211** | Tattoo: D0146

*G A R Momentum #**G A R Progress
****G A R Quantum** +*G A R Big Eye 1770
 18636059 +*G A R In Sure 1524 #*Connealy In Sure 8524
 #*G A R Prophet +*G A R Complete 3011
 #C R A Bextor 872.5205 608
 #*G A R Objective 1885
 #MCC Daybreak
 +*G A R Objective 277L

CW	+50
MARB	+1.14
RE	+1.06
FAT	-0.18
\$M	\$73
\$W	+73
\$AXH	+178
\$AXJ	+168
\$B	+169
\$C	+292

CED	BEPD	WEPD	YEPD	SC	DOC	MILK	\$AXH	\$AXJ	\$B	\$C								
+13	-3	+70	+120	+1.34	+25	+28	+178	+168	+169	+292								
CED	BW	WW	YW	DMI	YH	SC	DOC	HP	CEM	MILK	MW	MH	CW	Marb	RE	Fat	TEND	\$C
8	9	69	74	72	88	7	30	22	53	47	78	84	55	10	31	60	69	+292

Here is another daughter of the Maplecrest and Hillhouse donor G A R Prophet 1754 who is a proven source of phenotype, growth, and carcass merit. This daughter of Quantum possesses a nice blend of calving ease, solid growth, and positive Marbling and Ribeye backed by progeny ratios on one head of 99 for birth, 113 for weaning, 104 for yearling, 102 for IMF and 103 for ribeye. Due to calve January 10, 2024 to GB Fireball 672.

44 Maplecrest Miss Wix 0069 [NHF]
 BD: 02-02-2020 | Cow ***19768787** | Tattoo: 0069

*G A R Momentum #**G A R Progress
****G A R Quantum** +*G A R Big Eye 1770
 18636059 +*G A R In Sure 1524 #*Connealy In Sure 8524
 #*G A R Prophet +*G A R Complete 3011
 #*A A R Ten X 7008 S A
 #*G A R 100X *G A R 5050 New Design A91
****Ogeechee Miss Wix 589** +*G A R Prophet
 18461922 +*Ogeechee Miss Wix 2012 Ogeechee Miss Wix 0089

CW	+51
MARB	+1.40
RE	+1.02
FAT	-0.42
\$M	\$89
\$W	+79
\$AXH	+188
\$AXJ	+175
\$B	+186
\$C	+330

CED	BEPD	WEPD	YEPD	SC	DOC	MILK	\$AXH	\$AXJ	\$B	\$C								
+12	+2.0	+74	+123	+69	+22	+34	+188	+175	+186	+330								
CED	BW	WW	YW	DMI	YH	SC	DOC	HP	CEM	MILK	MW	MH	CW	Marb	RE	Fat	TEND	\$C
23	64	26	59	67	29	49	40	36	57	20	72	40	35	4	4	3	22	+330

This daughter of Quantum provides a unique blend of genetic tools to create progressive seedstock. She delivers foot quality with the expected carcass quality along with an impressive set of \$ Indexes ranking in the top 1% for Marb, \$Grid and \$Combined as well as top 2% for \$Maternal and \$Wean. Due to calve January 11, 2024 to HPCA Veracious.

BRED Cows

45 **Maplecrest ForeverLady D0156**
 BD: 03-06-2020 | Cow ****19889565** | Tattoo: D0156
 #*SydGen Exceed 3223 +*SydGen Googol
 SydGen Enhance +*SydGen Forever Lady 1255
 18170041 SydGen Rita 2618 #*SydGen Liberty GA 8627
 #*G A R Prophet #Fox Run Rita 9308
 #*Maplecrest ForeverLady S5090 #C R A Bextor 872 5205 608
 18301279 *Maplecrest Forever Lady 2019 +G A R Objective 1885
 #MCC Daybreak
 +*Maplecrest ForeverLady K0158
 \$AXH \$W
 +178 +73
 \$AXJ \$B
 +145 +199
 \$C
 +332

CED	BEPD	WEPD	YEPD	SC	DOC	MILK	\$AXH	\$W	\$AXJ	\$B
+4	+1.9	+78	+146	+67	+32	+25	+145	+199		

CED	BW	WW	YW	DMI	YH	SC	DOC	HP	CEM	MILK	MW	MH	CW	Marb	RE	Fat	TEND	\$C
55	38	43	17	83	65	59	8	66	92	79	81	78	73	1	79	66	3	+332

Here is a daughter of the ABS Global sire, Enhance. She carries on the tradition of her productive dam, who has 6 progeny IMF ratios of 115, by delivering elite Marbling along with an impressive set of \$ Indexes.
 Due to calve February 3, 2024 to G A R Apex.

46 **Maplecrest Blackcap 0008**
 BD: 01-01-2020 | Cow ****19889577** | Tattoo: 0008
 #*SydGen Exceed 3223 +*SydGen Googol
 SydGen Enhance +*SydGen Forever Lady 1255
 18170041 SydGen Rita 2618 #*SydGen Liberty GA 8627
 #*B/R Ambush 28 #Fox Run Rita 9308
 #*G A R 28 Ambush N340 #Rockn D Ambush 1531
 16923749 +G A R Predestined 2786 +B/R Ruby of Tiffany 8250
 #*G A R Predestined
 G A R Retail Product 2712
 \$AXH \$W
 +175 +69
 \$AXJ \$B
 +179 +168
 \$C
 +291

CED	BEPD	WEPD	YEPD	SC	DOC	MILK	\$AXH	\$W	\$AXJ	\$B
+13	-1.4	+72	+136	+13	+29	+26	+179	+168		

CED	BW	WW	YW	DMI	YH	SC	DOC	HP	CEM	MILK	MW	MH	CW	Marb	RE	Fat	TEND	\$C
1	1	73	26	68	80	87	23	26	55	50	54	71	61	21	24	37	77	+291

This daughter of Enhance will be one of the last daughters of G A R 28 Ambush N340 to sell. Her EPD profile is strong in many areas including calving ease, growth, HP, foot quality, carcass merit, and topped off by a well-balanced set of \$ Indexes.
 Due to calve February 11, 2024 to HPCA Veracious.

47 **Maplecrest Eva L9125**
 BD: 02-24-2019 | Cow ****19572928** | Tattoo: L9125
 #*G A R Prophet #C R A Bextor 872 5205 608
 #*G A R Proactive +G A R Objective 1885
 18333424 *G A R Daybreak 1521 #MCC Daybreak
 #*EXAR Denver 2002B +*G A R 5050 New Design 1039
 #*Maplecrest Eva 4007 #EXAR Upshot 0562B
 17840162 *Maplecrest Eva 9005 +Exar Royal Lass 1067
 #G A R Solution
 Maplecrest Eva 7010
 \$AXH \$W
 +112 +79
 \$AXJ \$B
 +155 +155
 \$C
 +250

CED	BEPD	WEPD	YEPD	SC	DOC	MILK	\$AXH	\$W	\$AXJ	\$B
+7	+1.9	+81	+143	+1.20	+15	+37	+155	+155		

CED	BW	WW	YW	DMI	YH	SC	DOC	HP	CEM	MILK	MW	MH	CW	Marb	RE	Fat	TEND	\$C
63	70	18	21	76	11	17	78	20	86	18	32	4	30	61	20	28	24	+250

Eva L9125 is off to a nice start of her productive career with progeny ratios on two head of 102 for birth, 118 for weaning, 111 for yearling and 115 for ribeye. This Proactive daughter traces directly back to one of the most meaningful donors in the history of our program, Maplecrest Eva 7010. Check out her impressive growth genetic projections.
 Due to calve January 12, 2024 to HPCA Veracious.

48 **Maplecrest Rita 9222**
 BD: 09-06-2019 | Cow ****19703018** | Tattoo: 9222
 #*G A R Sure Fire #*Connealy In Sure 8524
 #*G A R Phoenix +Chair Rock 5050 G A R 8086
 18636106 +*G A R Prophet N744 #*G A R Prophet
 #*PVF Insight 0129 +*G A R Daybreak 440
 #*Maplecrest Rita A7204 #*S A V Brilliance 8077
 19106025 *Maplecrest Rita 2026 +*PVF Missie 790
 #*Connealy Confidence 0100
 +*Maplecrest Rita M546
 \$AXH \$W
 +117 +87
 \$AXJ \$B
 +132 +192
 \$C
 +317

CED	BEPD	WEPD	YEPD	SC	DOC	MILK	\$AXH	\$W	\$AXJ	\$B
+8	+1.9	+92	+158	+1.20	+34	+35	+132	+192		

CED	BW	WW	YW	DMI	YH	SC	DOC	HP	CEM	MILK	MW	MH	CW	Marb	RE	Fat	TEND	\$C
75	88	3	4	95	2	28	1	18	64	16	3	1	2	34	2	33	71	+317

Don't overlook the genetic possibilities with this daughter of GAR Phoenix. 9222 has elite projections for growth and Ribeye along with an impressive set of \$ Indexes. Her granddam is Maplecrest Rita 2026 who was a past Grand Champion Female at the Canadian Royal Winter Fair, Grand Champion Bred & Owned Female at the Atlantic National, and Reserve Grand Champion Bred & Owned Cow/Calf Pair at the NJAS.
 Due to calve January 11, 2024 to HPCA Veracious.



LOT 46
Maplecrest Blackcap 0008

BRED Cows

49 **Maplecrest Eva 0066**
 BD: 01-30-2020 | Cow #19886893 | Tattoo: 0066
 #*G A R Sure Fire #*Connealy In Sure 8524
 #*G A R Phoenix #Chair Rock 5050 G A R 8086
 18636106 #*G A R Prophet N744 #*G A R Prophet
 #TC Total 410 #G A R Daybreak 440
Maplecrest Eva 7010 #Bon View New Design 208
 15882680 Maplecrest Eva 4108 #TC Erica Eileen 2047
 #*G A R Everest 9409
 #Maplecrest RBC Eva 133

CW	+76
MARB	+99
RE	+91
FAT	+1.001
\$M	+68
\$W	+175
\$AXH	+188
\$B	+199
\$C	+326

CED	BEPD	WEPD	YEPD	SC	DOC	MILK	\$AXJ	\$B
+11	+1.6	+75	+135	+1.18	+25	+29	+175	+199

CED	BW	WW	YW	DMI	YH	SC	DOC	HP	CEM	MILK	MW	MH	CW	Marb	RE	Fat	TEND	\$C
31	73	30	18	49	33	39	22	40	61	43	41	20	12	18	21	47	60	+326

Here is one of the very last direct daughters of Maplecrest Eva 7010 to sell. She balances calving ease with solid growth, carcass merit, and an impressive set of \$ Indexes. Due to calve February 26, 2024 to HPCA Veracious.

50 **Maplecrest Blackcap 0258**
 BD: 09-01-2020 | Cow #20020044 | Tattoo: 0258
 #*G A R Sure Fire #*Connealy In Sure 8524
 #*G A R Phoenix #Chair Rock 5050 G A R 8086
 18636106 #*G A R Prophet N744 #*G A R Prophet
 #G A R Method #G A R Daybreak 440
 #*Maplecrest Blackcap 7136 #G A R Momentum
 19108149 #*G A R 28 Ambush N340 #*G A R Daybreak 1332
 #*B/R Ambush 28
 #G A R Predestined 2786

CW	+60
MARB	+115
RE	+1.11
FAT	-.019
\$M	+63
\$W	+184
\$AXH	+184
\$B	+195
\$C	+307

CED	BEPD	WEPD	YEPD	SC	DOC	MILK	\$AXJ	\$B
+9	+2.0	+79	+139	+1.75	+20	+25	+195	+188

CED	BW	WW	YW	DMI	YH	SC	DOC	HP	CEM	MILK	MW	MH	CW	Marb	RE	Fat	TEND	\$C
54	83	23	18	76	22	13	50	48	40	72	26	18	30	13	6	19	82	+307

This daughter of G A R Phoenix is a granddaughter of the noted G A R 28 Ambush N340. She delivers the expected growth and carcass merit that you would expect from this cow family. Due to calve January 10, 2024 to E&B Wildcat 9402.

51 **Maplecrest Rita 0286**
 BD: 09-18-2020 | Cow #20019802 | Tattoo: 0286
 #*G A R Sure Fire #*Connealy In Sure 8524
 #*G A R Phoenix #Chair Rock 5050 G A R 8086
 18636106 #*G A R Prophet N744 #*G A R Prophet
 #G A R Method #G A R Daybreak 440
 #*Maplecrest Rita 8234 #G A R Momentum
 19429341 #*Maplecrest Rita 5102 #*G A R Daybreak 1332
 #*A A R Ten X 7008 S A
 #G A R 28 Ambush 1949

CW	+59
MARB	+1.23
RE	+95
FAT	+0.032
\$M	+46
\$W	+184
\$AXH	+184
\$B	+175
\$C	+296

CED	BEPD	WEPD	YEPD	SC	DOC	MILK	\$AXJ	\$B
+8	+5	+72	+133	+96	+19	+21	+175	+193

CED	BW	WW	YW	DMI	YH	SC	DOC	HP	CEM	MILK	MW	MH	CW	Marb	RE	Fat	TEND	\$C
51	58	39	12	69	28	39	51	83	88	83	21	28	37	4	18	81	55	+296

This daughter of Phoenix traces directly to G A R 28 Ambush 1949, a maternal sister to G A R Prophet and one of the most proven sources of Marbling to be found. Check out her solid growth, strong carcass merit, and excellent \$Beef and \$Combined Indexes. Due to calve January 11, 2024 to Yon Top Cut G730.

52 **Maplecrest Blackcap 0288**
 BD: 09-22-2020 | Cow #20019807 | Tattoo: 0288
 #*G A R Sure Fire #*Connealy In Sure 8524
 #*G A R Combustion #Chair Rock 5050 G A R 8086
 18943322 #*G A R Momentum 1724 #*G A R Momentum
 #*G A R Storm #*Quaker Hill Rampage 0A36
 #*Maplecrest Blackcap 8308 Maplecrest Eva 7010
 19429350 #*G A R Ingenuity 3132 #*G A R 28 Ambush N340

CW	+53
MARB	+1.39
RE	+1.18
FAT	-.014
\$M	+61
\$W	+214
\$AXH	+210
\$B	+200
\$C	+320

CED	BEPD	WEPD	YEPD	SC	DOC	MILK	\$AXJ	\$B
+10	+1.4	+70	+128	+1.30	+13	+19	+210	+200

CED	BW	WW	YW	DMI	YH	SC	DOC	HP	CEM	MILK	MW	MH	CW	Marb	RE	Fat	TEND	\$C
15	26	72	41	34	66	16	77	18	35	92	64	39	63	7	2	8	97	+320

Owned with Tad Dodderer, Johnston, OH
 This daughter of G A R Combustion is a granddaughter of the popular G A R Ingenuity 3132. Check out her elite genetic projections for Marbling and Ribeye with 5 of the 8 \$Value Indexes in the top 1%. Due to calve February 6, 2024 to E&B Wildcat 9402.

53 **Maplecrest Blackclass 0280**
 BD: 09-14-2020 | Cow #20019808 | Tattoo: 0280
 #*G A R Sure Fire #*Connealy In Sure 8524
 #*G A R Combustion #Chair Rock 5050 G A R 8086
 18943322 #*G A R Momentum 1724 #*G A R Momentum
 #*G A R Method #G A R Daybreak 1332
 #*Maplecrest Blackclass 8275 #*G A R Prophet
 19429347 #*Maplecrest Blackclass 5136 #*Maplecrest Blackclass T3076

CW	+59
MARB	+1.44
RE	+75
FAT	+0.028
\$M	+61
\$W	+208
\$AXH	+208
\$B	+198
\$C	+318

CED	BEPD	WEPD	YEPD	SC	DOC	MILK	\$AXJ	\$B
+9	+1.3	+71	+139	-.19	+25	+32	+197	+198

CED	BW	WW	YW	DMI	YH	SC	DOC	HP	CEM	MILK	MW	MH	CW	Marb	RE	Fat	TEND	\$C
16	20	89	31	63	98	95	33	29	55	47	81	89	66	3	40	74	77	+318

Another Combustion daughter that posted individual ratios of 101 for birth, 109 for weaning and 101 for both yearling and IMF. This female offers appealing growth, elite Marbling, and impressive \$Beef, and \$Combined Indexes that add to her value. Due to calve January 10, 2024 to G A R Sunbeam.

54 **Maplecrest MCD Blackcap 0279**
 BD: 09-12-2020 | Cow #20014930 | Tattoo: 0279
 #*G A R Momentum #*G A R Progress
 #*G A R Drive #G A R Big Eye 1770
 18301470 #*Maplecrest Blackcap 3007 #*Connealy In Sure 8524
 #*MCD Pines Blackcap 8822 #Maplecrest Blackcap K9283
 19445800 #*MCD Pines Blackcap 5012 #*Quaker Hill Rampage 0A36
 #*Maplecrest Blackcap 1011 Maplecrest Eva 7010
 #*CF Bennett Expert Z138
 #*Maplecrest Blackcap 1011

CW	+53
MARB	+1.22
RE	+63
FAT	+0.011
\$M	+35
\$W	+140
\$AXH	+140
\$B	+178
\$C	+266

CED	BEPD	WEPD	YEPD	SC	DOC	MILK	\$AXJ	\$B
+5	+2.1	+79	+138	+65	+18	+20	+112	+178

CED	BW	WW	YW	DMI	YH	SC	DOC	HP	CEM	MILK	MW	MH	CW	Marb	RE	Fat	TEND	\$C
68	72	13	18	72	15	39	62	55	93	83	3	6	24	8	50	51	44	+266

Owned with Diane McDonald, Hillsboro, OH
 This female's pedigree features two sires that were bred in the Maplecrest program, G A R Drive and G A R Storm. 0279 posted individual ratios of 117 for weaning, 109 for yearling, 103 for IMF and 111 for ribeye. Her EPD profile showcases strong growth and Marbling, along with quality \$Beef and \$Combined Indexes. Due to calve January 10, 2024 to G A R Apex.



FALL *Calving Cows*



LOT 55
Maplecrest Fanny 8017

55

Maplecrest Fanny 8017

BD: 01-08-2018 | Cow +*19289217 | Tattoo: 8017

****G A R Proactive**
18333424

#*G A R Prophet
*G A R Daybreak 1521

#C R A Bextor 872 5205 608
+G A R Objective 1885
#MCC Daybreak
*G A R 5050 New Design 1039
Connealy Tobin
Becka Gala of Conanga 8281
#*Riverbend Mile High 3718
2 Bar Objective 863



#*Connealy Confidence 0100
****SJH Ms Confidence 170**
17220254

*2 Bar Mile High 9360

CW	+54
MARB	+87
RE	+85
FAT	+013
\$M	+99
\$W	+74

\$AXH	+171
\$B	+165
\$C	+313

CED	BE PD	WE PD	YE PD	SC	DOC	MILK	\$AXJ	\$B	\$C								
+7	+1.2	+68	+125	+36	+23	+30	+159	+165	+313								
CED	BW	WW	YW	DMI	YH	SC	DOC	HP	CEM	MILK	MW	MH	CW	Marb	RE	Fat	TEND
54	45	52	40	73	98	76	31	22	53	50	98	99	61	31	39	62	21

Here is a donor entering the prime of her life with a proven track record and pedigree diversity for great mating flexibility. 8017 is best known for producing the \$120,000 valued Maplecrest Fanny 0063 who serves as a donor for Maplecrest and Baldrige. 8017 offers a very balanced EPD profile backed by a production record of 3 at 111 for birth, 114 for weaning, 111 for yearling, 118 for IMF and 111 for ribeye. Check out her elite \$Maternal and impressive \$Combined Indexes. Flushed 4 times for an average of 10 high quality embryos. She will calve prior to sale day to Connealy Commerce.



Maplecrest Fanny 0063 - The \$120,000 valued daughter to 8017



SJH Ms Confidence 170 - Foundation female to our Fanny Family

FALL *Calving Cows*



LOT 57
Maplecrest Blackcap 9187

56 **Maplecrest Blackcap 0025**
 BD: 01-07-2020 | Cow ***19887127** | Tattoo: 0025

****G A R Ashland 18217198** *G A R Early Bird
 *Chair Rock Ambush 1018

***G A R Ingenuity 3132 17353925** #G A R Ingenuity
 *G A R 28 Ambush N340

*G A R Daylight
 *G A R Progress 830
 #B/R Ambush 28
 *G A R Yield Grade N366
 *G A R New Design 5050
 G A R Objective 1067
 #B/R Ambush 28
 *G A R Predestined 2786

CW	+56
MARB	+1.29
RE	+1.35
FAT	-.012
\$M	+74
\$W	+76
\$AXH	+190
\$XJ	+198
\$B	+188
\$C	+318

CED	BEPD	WEPD	YEPD	SC	DOC	MILK	\$AXH	\$W	\$B
+16	-1.5	+70	+128	+98	+17	+34	+190	+76	+188

CED	BW	WW	YW	DMI	YH	SC	DOC	HP	CEM	MILK	MW	MH	CW	Marb	RE	Fat	TEND	\$C
2	4	81	48	76	67	40	67	47	5	12	73	73	60	8	2	20	99	+318

This attractive daughter of Ashland has one progeny ribeye ratio of 102 and was produced by the popular and valuable G A R Ingenuity 3132, who has over \$800,000 in progeny sales. Her predictable genetics include extra calving ease, solid growth, elite carcass merit and impressive \$ Indexes. She will calve prior to sale day to G A R Transcendent.



Maplecrest & Hillhouse Foundation Donor - G A R Ingenuity 3132

57 **Maplecrest Blackcap 9187**
 BD: 08-12-2019 | Cow ***19700832** | Tattoo: 9187

****G A R Ashland 18217198** *G A R Early Bird
 *Chair Rock Ambush 1018

***Maplecrest Blackcap 6026 18623374** #K C F Bennett Absolute
 *G A R 5050 New Design 0530

*G A R Daylight
 *G A R Progress 830
 #B/R Ambush 28
 *G A R Yield Grade N366
 #S A V Final Answer 0035
 Thomas Miss Lucy 5152
 #G A R New Design 5050
 +DRMCTR Objective 7357

CW	+52
MARB	+1.12
RE	+86
FAT	+0.08
\$M	+61
\$W	+78
\$AXH	+172
\$XJ	+168
\$B	+163
\$C	+272

CED	BEPD	WEPD	YEPD	SC	DOC	MILK	\$AXH	\$W	\$B
+8	+7	+87	+144	+60	+26	+21	+172	+78	+163

CED	BW	WW	YW	DMI	YH	SC	DOC	HP	CEM	MILK	MW	MH	CW	Marb	RE	Fat	TEND	\$C
57	69	19	23	62	59	62	18	29	82	74	30	64	44	25	30	23	97	+272

This daughter of Ashland combines individual ratios of 97 for birth, 115 for weaning, 101 for yearling, 123 for IMF and 110 for ribeye with progeny ratios on one head of 102 for yearling, 107 for IMF and 111 for ribeye. 9187 was produced by a maternal sister to the former Select Sires member G A R Anticipation who was a past donor at Maplecrest. While 6026 left the herd too early, she left us with a daughter worthy of donor status. Check out her special growth and Marbling EPDs. She will calve prior to sale day to E&B Wildcat 9402.



LOT 56
Maplecrest Blackcap 0025

FALL *Calving Cows*



Maplecrest Blackcap R9275 - Lot 58 & Dam of Lot 20

58 **Maplecrest Blackcap R9275**
 BD: 09-04-2019 | Cow *19723931 | Tattoo: R9275
 *G A R Momentum #*G A R Progress
 *G A R Method +G A R Big Eye 1770
 18025296 *G A R Daybreak 1332 #MCC Daybreak
 #*G A R Prophet *G A R 5050 New Design N549
 **Maplecrest Blackcap A5237 #C R A Bextor 872.5205 608
 18471712 *Maplecrest Blackcap K2219 +G A R Objective 1885
 #*Conneally Confidence 0100
 *G A R Total 9A38

CW	+74
MARB	+1.49
RE	+1.24
FAT	+0.58
\$M	+55
\$W	+89
\$AXH	+205
\$AXJ	+222
\$B	+206
\$C	+322

CED	BEPD	WEPD	YEPD	SC	DOC	MILK	\$AXJ	\$B
+6	+2.3	+93	+160	+39	+19	+35	+222	+206

CED	BW	WW	YW	DMI	YH	SC	DOC	HP	CEM	MILK	MW	MH	CW	Marb	RE	Fat	TEND
58	65	9	22	88	24	72	61	56	26	15	25	18	15	2	2	92	95

Those looking for a donor should not overlook this one! This special daughter of Method has served us well as a donor and has a production record of 1 at 113 for birth, 140 for weaning and 129 for yearling with 3 at 104 for ribeye. Her elite EPDs and Indexes will benefit any breeding program. R9275 has 10 EPDs and Indexes that rank in the top 1% of the breed. She has been flushed 4 times to average 3 high quality embryos. She will calve prior to sale day to Yon Top Cut G730.

59 **Maplecrest Rita 9210**
 BD: 08-25-2019 | Cow *19723909 | Tattoo: 9210
 *G A R Momentum #*G A R Progress
 *G A R Method +G A R Big Eye 1770
 18025296 *G A R Daybreak 1332 #MCC Daybreak
 *G A R Storm #*Quaker Hill Rampage 0A36
 **AH/LA Rita 1183 Maplecrest Eva 7010
 19140022 *FF Rita 3R37 of 9Q23 Revenue #*Rito Revenue 5M2 of 2536 Pre
 *Rita 9Q23 of Rita 5F56 GHM

CW	+58
MARB	+1.11
RE	+0.62
FAT	+0.006
\$M	+49
\$W	+66
\$AXH	+127
\$AXJ	+102
\$B	+173
\$C	+273

CED	BEPD	WEPD	YEPD	SC	DOC	MILK	\$AXJ	\$B
+6	+2.3	+79	+149	+04	+19	+27	+102	+173

CED	BW	WW	YW	DMI	YH	SC	DOC	HP	CEM	MILK	MW	MH	CW	Marb	RE	Fat	TEND
51	62	46	8	91	52	75	59	37	28	78	19	21	57	18	70	54	27

Pounds of beef and growth are important traits to help the commercial producer pay the bills. 9210 will also give you quality pounds of beef with her marbling EPD. This female combines individual ratios of 101 for weaning and 104 for yearling with progeny ratios on one head of 84 for birth and 121 for weaning. She will calve prior to sale day to Beal Breakthrough.

60 **Maplecrest Blackcap 9240**
 BD: 09-18-2019 | Cow *19723917 | Tattoo: 9240
 *G A R Momentum #*G A R Progress
 *G A R Method +G A R Big Eye 1770
 18025296 *G A R Daybreak 1332 #MCC Daybreak
 #*G A R 100X *G A R 5050 New Design N549
 **Maplecrest Blackcap 6202 *A A R Ten X 7008 S A
 18764924 *G A R 28 Ambush N340 #*B/R Ambush 28
 *G A R Predestined 2786

CW	+48
MARB	+1.11
RE	+0.75
FAT	+0.006
\$M	+51
\$W	+70
\$AXH	+163
\$AXJ	+165
\$B	+162
\$C	+261

CED	BEPD	WEPD	YEPD	SC	DOC	MILK	\$AXJ	\$B
+12	-.2	+76	+132	+18	+27	+23	+165	+162

CED	BW	WW	YW	DMI	YH	SC	DOC	HP	CEM	MILK	MW	MH	CW	Marb	RE	Fat	TEND
34	38	36	42	70	44	66	22	71	91	77	42	44	62	13	49	59	53

9240 possesses a combination of calving ease and growth that will allow her to produce bulls that appeal to the commercial producer. Her Marbling EPD ensures that her seedstock will produce a quality product and she stems from the highly proven N340 donor. She will calve prior to sale day to HPCA Veracious.

FALL *Calving Cows*



Maplecrest Eva 4019 - Dam of Lots 62 & 67

63 **Maplecrest Eva 9252**

BD: 10-02-2019 | Cow *19723923 | Tattoo: 9252

#*G A R Sure Fire #*Connealy In Sure 8524
 #*G A R Phoenix #Chair Rock 5050 G A R 8086
 18636106 *G A R Prophet N744

*G A R Method *G A R Momentum
 *Maplecrest Eva 7142 *G A R Daybreak 1332
 19106014 *Maplecrest Rita 5192 *G A R Fast Break
 *Maplecrest Rita 2150



CW	+64
MARB	+1.08
RE	+0.78
FAT	+0.24
\$M	+52
\$W	+66
\$AXH	+148
\$AXJ	+182
\$B	+182
\$C	+288

CED	BEPD	WEPD	YEPD	SC	DOC	MILK	\$AXH	\$W	\$B	\$C							
+11	+1.7	+73	+126	+74	+13	+24	+148	+66	+182	+288							
26	63	36	43	72	10	48	79	89	32	60	32	20	17	13	48	77	25

Eva 9252 combines individual ratios of 103 for birth, 105 for weaning, 102 for yearling, 109 for IMF and 104 for ribeye with a production record of 2 at 110 for birth and 102 for weaning with 1 at 104 for yearling and 109 for IMF. This female excels in the traits that will make a breeder money including calving ease, growth and carcass merit. She will calve prior to sale day to Connealy Commerce.

62 **Maplecrest Eva L9128**

BD: 02-27-2019 | Cow *19572959 | Tattoo: L9128

#*G A R Sure Fire #*Connealy In Sure 8524
 #*G A R Phoenix #Chair Rock 5050 G A R 8086
 18636106 *G A R Prophet N744

#*EXAR Denver 2002B #*EXAR Upshot 0562B
 #*Maplecrest Eva 4019 #EXAR Royal Lass 1067
 17840163 *Maplecrest Eva 9005 #G A R Solution
 Maplecrest Eva 7010



CW	+77
MARB	+1.11
RE	+0.88
FAT	+0.06
\$M	+51
\$W	+75
\$AXH	+156
\$AXJ	+140
\$B	+191
\$C	+299

CED	BEPD	WEPD	YEPD	SC	DOC	MILK	\$AXH	\$W	\$B	\$C							
+3	+3.7	+94	+161	+1.31	+20	+24	+156	+140	+191	+299							
82	94	5	6	97	26	33	57	60	80	64	6	37	8	6	16	30	27

This daughter of G A R Phoenix comes from the productive Eva cow family. Another high weaning and yearling growth female that excels in carcass merit as well as \$Beef and \$Combined. Due to calve September 30, 2023 to Poss Rawhide.



Maplecrest Eva 7010 - Cornerstone of the Eva Family



E&B Wildcat 9402 - Popular Service Sire of Lot 64

64 **Maplecrest Belle 9266**

BD: 09-29-2019 | Cow *19725813 | Tattoo: 9266

#*G A R Prophet #C R A Bextor 872 5205 608
 #*G A R Prophet K263 #G A R Objective 1885
 17799492 *Chair Rock 5050 G A R 1131

*V A R Ranger 3008 #*Sandpoint Blackbird 8809
 #*PAR Belle 7169 *Lone Star Object Belle L040
 19118605 *Lone Star Object Belle L040 #S S Objective T510 0T26
 *Lone Star El61 Belle E506



CW	+55
MARB	+1.10
RE	+1.12
FAT	-0.030
\$M	+60
\$W	+70
\$AXH	+195
\$AXJ	+182
\$B	+177
\$C	+290

CED	BEPD	WEPD	YEPD	SC	DOC	MILK	\$AXH	\$W	\$B	\$C							
+7	+2.8	+84	+142	+0.6	+26	+22	+195	+70	+177	+290							
93	99	9	21	70	62	89	23	81	92	75	30	41	35	9	2	5	33

9266's dam came to us from the noted Percy Angus Ranch program and she stems from a granddam with over \$318,000 in progeny sales. Like her sire, K263, she has strong genetic indicators for growth and carcass. She will calve prior to sale day to E&B Wildcat 9402.

FALL *Calving Cows*



LOT 67
Maplecrest Eva R9277

65 Maplecrest Blackcap L7219
 BD: 09-21-2017 | Cow ****19106485** | Tattoo: L7219
 #*G A R Progress
***G A R Momentum**
 17354145 +G A R Big Eye 1770
 #*Connealy In Sure 8524
***Maplecrest Blackcap 3007**
 17670660 +Maplecrest Blackcap K9283

CW	+26
MARB	+1.72
RE	+79
FAT	+0.23
\$M	+60
\$W	+58
\$AXH	+200
\$AXJ	+168
\$B	+181
\$C	+295

CED	BEPD	WEPD	YEPD	SC	DOC	MILK	\$AXH	\$W	\$B	\$C							
+16	-1.4	+49	+83	+62	+26	+27	+200	+58	+181	+295							
CED	BW	WW	YW	DMI	YH	SC	DOC	HP	CEM	MILK	MW	MH	CW	Marb	RE	Fat	TEND
3	7	99	99	2	95	48	23	89	100	50	98	86	97	1	34	77	75

L7219 is an attractive full sister to G A R Drive. Like her brother, she excels in calving ease and marbling. This female combines an individual IMF ratio of 121 with progeny IMF ratios one 2 head of 120 while her famous dam has 58 progeny IMF ratios of 103. Note her 16 CED EPD for calving ease. She will calve prior to sale day to Connealy Commerce.

66 Maplecrest Rita L9272
 BD: 09-17-2019 | Cow ****19723928** | Tattoo: L9272
 #*Connealy In Sure 8524
****G A R Sure Fire**
 17328461 +Chair Rock 5050 G A R 8086
 #*G A R Prophet
***G A R Prophet 1754**
 17965274 +*G A R Daybreak C80

CW	+45
MARB	+1.17
RE	+49
FAT	+0.14
\$M	+73
\$W	+67
\$AXH	+106
\$AXJ	+73
\$B	+169
\$C	+292

CED	BEPD	WEPD	YEPD	SC	DOC	MILK	\$AXH	\$W	\$B	\$C							
+14	-4	+65	+119	+95	+23	+31	+106	+67	+169	+292							
CED	BW	WW	YW	DMI	YH	SC	DOC	HP	CEM	MILK	MW	MH	CW	Marb	RE	Fat	TEND
9	20	70	42	41	49	37	26	5	55	41	50	48	75	13	78	51	43

This daughter of G A R Sure Fire was produced by the Maplecrest and Hillhouse donor 1754. Rita L9272 posted an individual IMF ratio of 127 and has a production record of 2 at 101 for birth and 102 for weaning with 1 at 102 for ribeye. Don't overlook her extra calving ease and Marbling along with her balanced \$ Index profile. She will calve prior to sale day to HPCA Veracious.

67 Maplecrest Eva R9277
 BD: 09-07-2019 | Cow ****19725009** | Tattoo: R9277
 #*Basin Payweight 1682
***Deer Valley Growth Fund**
 18827828 +*Deer Valley Rita 36113
 #*EXAR Denver 2002B
***Maplecrest Eva 4019**
 17840163 +Maplecrest Eva 9005

CW	+75
MARB	+55
RE	+82
FAT	+0.38
\$M	+45
\$W	+73
\$AXH	+170
\$AXJ	+168
\$B	+170
\$C	+265

CED	BEPD	WEPD	YEPD	SC	DOC	MILK	\$AXH	\$W	\$B	\$C							
+9	+1.0	+86	+157	+39	+17	+26	+170	+73	+168	+170							
CED	BW	WW	YW	DMI	YH	SC	DOC	HP	CEM	MILK	MW	MH	CW	Marb	RE	Fat	TEND
19	19	23	10	83	89	57	71	53	70	7	47	20	47	40	70	58	

Saving some of the best for last is this Growth Fund daughter out of a past Maplecrest Donor currently working in the Van Beek Ranch program in South Dakota. R9277 has one progeny turned in to AHIR that shows ratios of 101 for yearling and 102 for ribeye. This female traces directly to Eva 7010 and possesses special growth traits. She will calve prior to sale day to G A R Grass Roots.



Maplecrest Eva 4019 - Dam of Lots 62 & 67

American Angus Association \$Value Indexes



ANGUS
THE BUSINESS BREED

Dollar value indexes, or **\$Values**, are a tool used to select for several traits at once based on a specific breeding objective. An economic index approach takes into account genetic and economic values as well as the relationships between traits to select for profit.

Maternal Weaned Calf Value (\$M), an index expressed in dollars per head, predicts profitability differences in progeny due to genetics from conception to weaning. \$M is built off of a self-replacing herd model where commercial cattlemen replace 25% of their breeding females in the first generation and 20% in subsequent generations. Remaining cull females and all male progeny are sold as feeder calves. Increased selection pressure on \$M aims to decrease overall mature cow size and improve foot structure and fertility while maintaining weaning weights consistent with today's production.

Weaned Calf Value (\$W), an index expressed in dollars per head, provides the expected difference in future progeny preweaning performance from birth to weaning. \$W assumes that producers retain 20% of their female progeny for replacements and sell the rest of their cull female and male progeny as feeder calves. Over time, increased selection pressure on \$W will increase weaning and maternal milk traits while also continuing to increase mature cow size.

Feedlot Value (\$F), an index expressed in dollars per head, is the expected average difference in future progeny performance for post-weaning merit compared to progeny of other sires. The underlying objective assumes commercial producers will retain ownership of cattle through the feedlot phase and sell fed cattle on a carcass weight basis with no considerations of premiums or discounts for quality and yield grade.

Grid Value (\$G), an index expressed in dollars per carcass, is the expected average difference in future progeny performance for carcass grid merit, including quality and yield grade attributes, compared to progeny of other sires.

Beef Value (\$B), an index expressed in dollars per carcass, facilitates simultaneous multi-trait genetic selection for feedlot and carcass merit. \$B represents the expected average differences in the progeny postweaning performance and carcass value compared to progeny of other sires. This index assumes commercial producers wean all male and female progeny, retain ownership of these animals through the feedlot phase and market these animals on a quality-based carcass grid.

Combined Value (\$C), an index expressed in dollars per head, includes all traits that make up both \$M and \$B with the objective that commercial producers will replace 20% of their breeding females per year with replacement heifers retained within their own herd. The remaining cull heifer and steer progeny are then assumed to be sent to the feedlot where the producers retain ownership of those cattle and eventually sell them on a quality-based carcass merit grid.

EPDS DIRECTLY INCORPORATED INTO EACH \$VALUE

TRAIT	MATERNAL		TERMINAL			\$C
	\$M	\$W	\$F	\$G	\$B	
CEM	✓					✓
BW		✓				
WW	✓	✓				✓
YW			✓		✓	✓
CEM	✓					✓
Milk	✓	✓				✓
MW	✓	✓				✓
DOC	✓					✓
HP	✓					✓
Claw Angle	✓					✓
DMI			✓		✓	✓
CW			✓	✓	✓	✓
RE				✓	✓	✓
Marb				✓	✓	✓
Fat				✓	✓	✓



Maplecrest Blackbird B8127 Embryos from this young donor sell!



Maplecrest Phyllis 9043 Maternal Sibs to this female sell.



Maplecrest SS GF Phyllis 1080

Frozen Genetics Online Embryo REDUCTION SALE

Monday ☐ September 25, 2023



Maplecrest Rita 0231 Maternal sibs to this female sell.



SCC Nellie Girl 980 Embryos from this donor sell.



SCC SCH Phyllis 426 Select embryos available.



John & Joanie Grimes ☐ Lindsey & Adam Hall
2594 State Route 73 ☐ Hillsboro, Ohio 45133

MaplecrestAngus@gmail.com

Joanie Grimes: (937) 763-1198 ☐ John Grimes: (937) 763-6000

Adam Hall: (740) 336-8142 ☐ Lindsey Hall: (937) 763-8115

www.MaplecrestFarms.com





2594 State Route 73 • Hillsboro, Ohio 45133

**PRSR
FIRST CLASS**
U.S. POSTAGE
PAID
St. Joseph, MO
Permit #2017



20th Annual
**FEMALE
PRODUCTION SALE**

Saturday ■ September 23, 2023 ■ 6 PM

At the farm near Hillsboro, Ohio

John & Joanie Grimes ■ Lindsey & Adam Hall ■ 2594 State Route 73 ■ Hillsboro, Ohio 45133 ■ MaplecrestAngus@gmail.com
Joanie Grimes: (937) 763-1198 ■ John Grimes: (937) 763-6000 ■ Adam Hall: (740) 336-8142 ■ Lindsey Hall: (937) 763-8115

LiveAuctions.TV
Watch the sale and bid live online.

www.MaplecrestFarms.com

